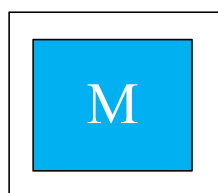
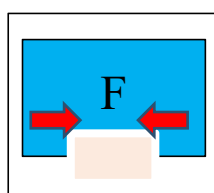


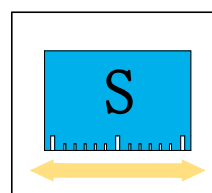
Sizes  
66.....180



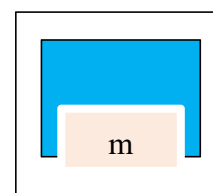
Weight  
0.27...6.4Kg



Gripping Force  
300...7020N



Stroke per finger  
6...18mm



Workpiece weight  
0.85...20Kg

应用案例 / Application example



③ AGP 160-NC 2 指平动密封型手爪 AGP 160-NC 2-Finger Parallel seal Gripper series

## 2 指平动密封型手爪 / 2-Finger Parallel Seal Gripper

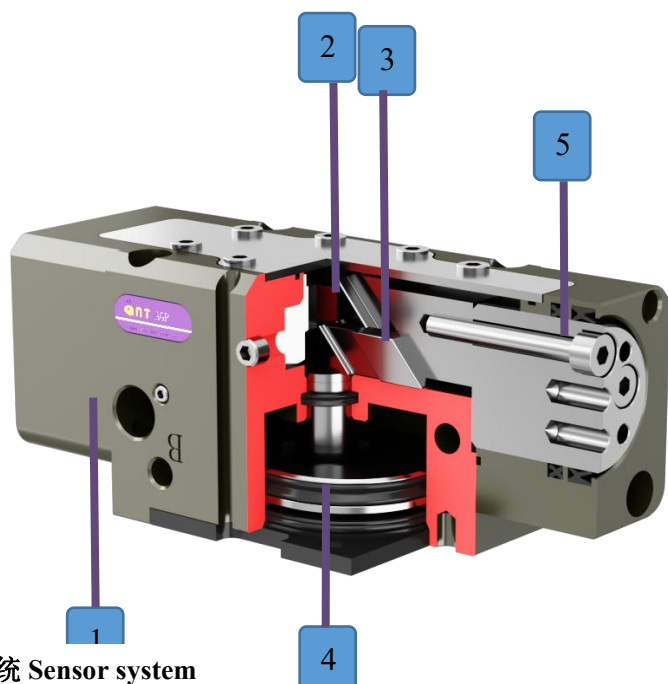
### 原理

- 压缩空气推动椭圆形活塞上下运动
- 楔形将驱动力转化为夹持力
- 完全密封结构

### Principle

- The oval piston is moved up or down by means of compressed air
- High gripping force as a result of optimal direction change of driving force into gripping force
- Completely Sealed

### 剖视图 / Sectional diagram



- 1 本体 Housing**  
涂层处理的高强度铝合金  
High-strength aluminum alloy, anodized
- 2 T 型导轨 T-slot guidance**  
重负载导轨：负载更长的手指长度  
Heavy load rails, robust base jaw guidance for extremely long gripper fingers
- 3 传动方式 Transmission Model**  
高动力传输  
High power transmission
- 4 驱动部分 Energy supply**  
大型椭圆形活塞，提供更大的夹持力  
Large oval piston: can have greater force
- 5 密封结构**  
防尘防水密封  
Completely Sealed

### 传感系统 Sensor system

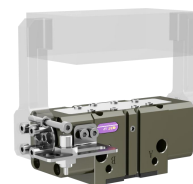
#### 磁性传感器 / Magnetic Sensor (选购/Order)



适用规格(NO.)	所有规格
NPN	WMS-M9N
PNP	WMS-M9P

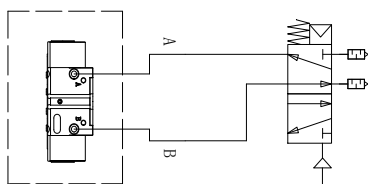
● 磁性传感器不适用于连接具有磁性的连接板或环境为磁场环境和环境温度大于 80℃ 下使用 / The magnetic sensors are not suitable for connecting the magnetic plate or the environment is magnetic field and the temperature is greater than 80℃.

#### 接近开关 / Proximity switch (选购/Order)



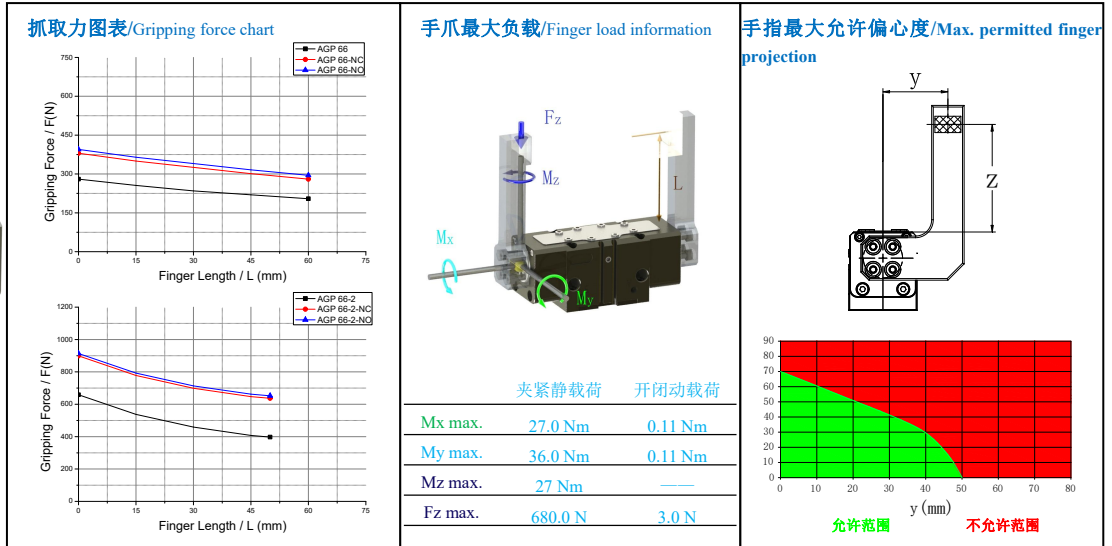
适用规格(NO.)	AGP 66/80/100/125	AGP 160/180
NPN	WPS-8GM18N	WPS-8GM35N
PNP	WPS-8GM18P	WPS-8GM35P

#### 手爪气动连接原理



型号	AGP		
	66/80	100/125	160/180
气管直径 (mm)	≥4	≥6	≥8
电磁阀有效截面积 (Cv/mm <sup>2</sup> )	≥17.0	≥17.0	≥28.0

## AGP 66



❖所有参数为气压 6bar 下测试/All data measured at 6bar

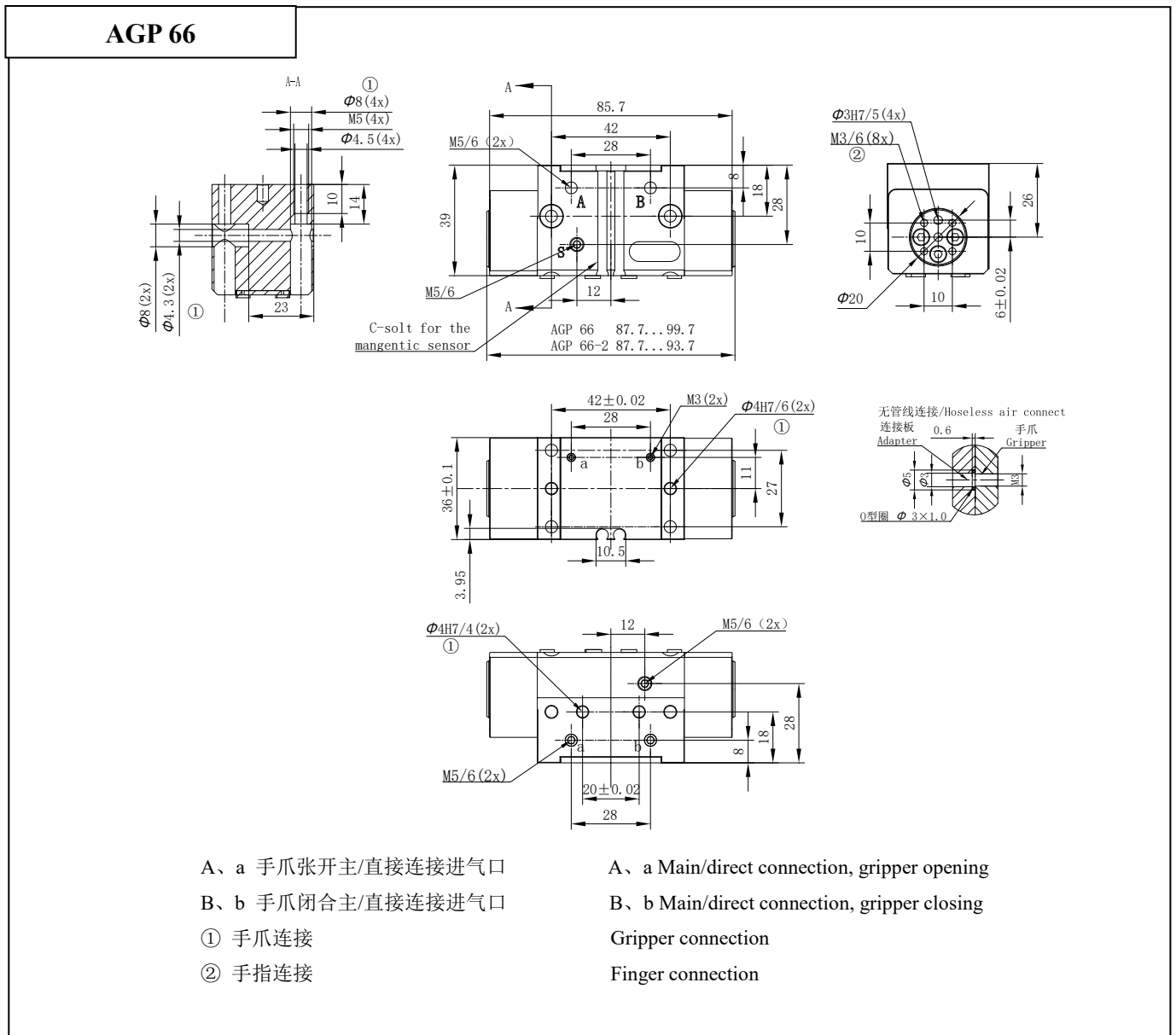
### 技术资料/Technical data

Description		AGP 66	AGP 66-NC	AGP 66-NO	AGP 66-2	AGP 66-2-NC	AGP 66-2-NO
手指单边行程 Stroke per finger	mm	6	6	6	3	3	3
理论夹持力-闭 Closing force	夹持力 $F=k*P$ (k:系数, P:bar)	N	50*P	66*P	110*P	150*P	
	6bar 气压下夹持力	N	300	396	660	900	
理论夹持力-开 Opening force	夹持力 $F=k*P$ (k:系数, P:bar)	N	54*P		70*P	120*P	158*P
	6bar 气压下夹持力	N	324		420	720	948
断气最小夹持力 Min. gripping force without pressure air	N		100	100		240	240
使用压力范围 Max./Min. operating pressure	bar				3/8		
自重 Self weight	Kg	0.32	0.38	0.38	0.32	0.38	0.38
空气消耗量/周期 Air consumption per double stroke	cm <sup>3</sup>	10.2	36	36	10.2	36	36
开/闭时间 Closing/opening time	s	0.04/0.04	0.03/0.06	0.06/0.03	0.04/0.04	0.03/0.06	0.06/0.03
重复精度 Repeat accuracy	mm				0.02		
最大手指长度 Max. permitted finger length	mm	60	60	60	50	50	50
单个手指最大重量 Max. permitted weight per finger	Kg	0.3	0.3	0.3	0.3	0.3	0.3
适应最小/最大环境温度 Min./Max. ambient temperature	°C				标准型 (无) : 5/80 高温型 (-R) : 5/200		
IP 等级 IP class					IP 67		

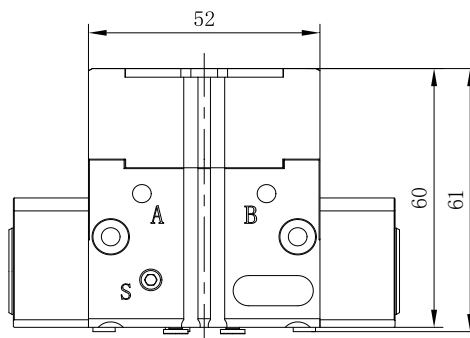
❖P: 空气压力[bar], 手指夹持工件作用点到手指安装面距离 L [mm] \*重复精度: 连续动作 100 次后检测值

❖P: Pressure [bar], L:The distance from the point of the Finger gripping the workpiece to the finger mounting surface [mm] \*Repeat accuracy is defined as the spread of the limit position after 100 consecutive strokes

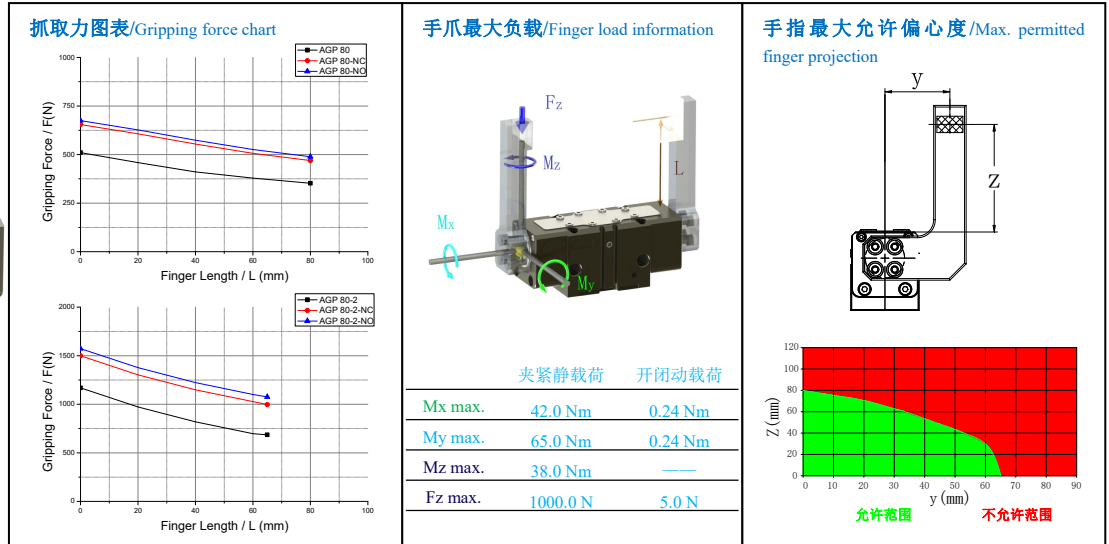
尺寸图/Dimensions



NO/NC 单作用手爪 / NO/NC single-acting gripper



# AGP 80



❖所有参数为气压 6bar 下测试/All data measured at 6bar

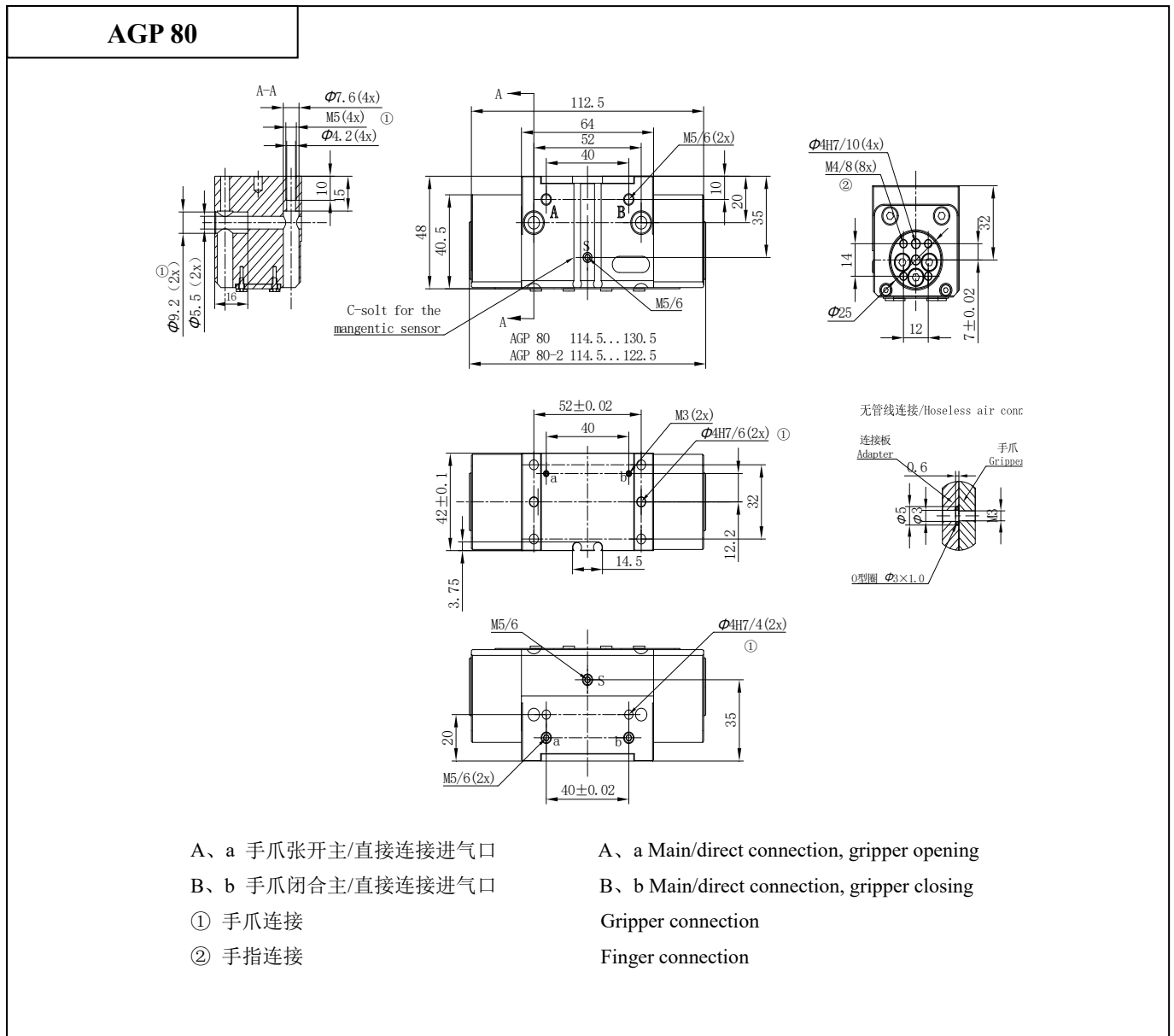
## 技术资料/Technical data

Description	AGP 80	AGP 80-NC	AGP 80-NO	AGP 80-2	AGP 80-2-NC	AGP 80-2-NO
手指单边行程 Stroke per finger	mm	8	8	8	4	4
理论夹持力-闭 Closing force	夹持力 $F=k*P$ (k:系数, P:bar)	N	92*P	117*P	205*P	260*P
	6bar 气压下夹持力	N	552	706	1230	1560
理论夹持力-开 Opening force	夹持力 $F=k*P$ (k:系数, P:bar)	N	100*P	120*P	220*P	276*P
	6bar 气压下夹持力	N	600	750	1320	1656
断气最小夹持力 Min. gripping force without pressure air	N		155	155	330	330
使用压力范围 Max./Min. operating pressure	bar			3/8		
自重 Self weight	Kg	0.6	0.73	0.72	0.6	0.73
空气消耗量/周期 Air consumption per double stroke	cm <sup>3</sup>	25.2	44.5	44.5	25.2	44.5
开/闭时间 Closing/opening time	s	0.04/0.04	0.05/0.03	0.03/0.05	0.03/0.03	0.05/0.03
重复精度 Repeat accuracy	mm			0.02		
最大手指长度 Max. permitted finger length	mm	80	80	80	65	65
单个手指最大重量 Max. permitted weight per finger	Kg	0.5	0.5	0.5	0.5	0.5
适应最小/最大环境温度 Min./Max. ambient temperature	°C				标准型 (无) : 5/80 高温型 (-R) : 5/200	
IP 等级 IP class					IP 67	

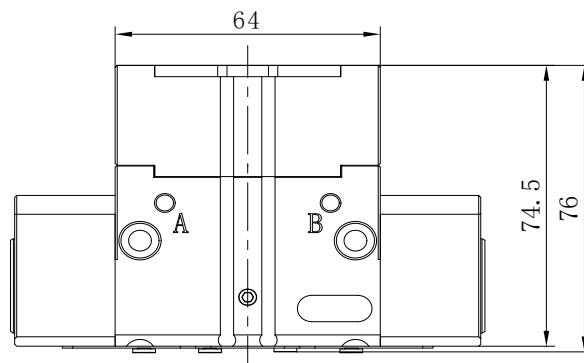
❖P: 空气压力[bar], 手指夹持工件作用点到手指安装面距离 L [mm] \*重复精度: 连续动作 100 次后检测值

❖P: Pressure [bar], L:The distance from the point of the Finger gripping the workpiece to the finger mounting surface [mm] \*Repeat accuracy is defined as the spread of the limit position after 100 consecutive strokes

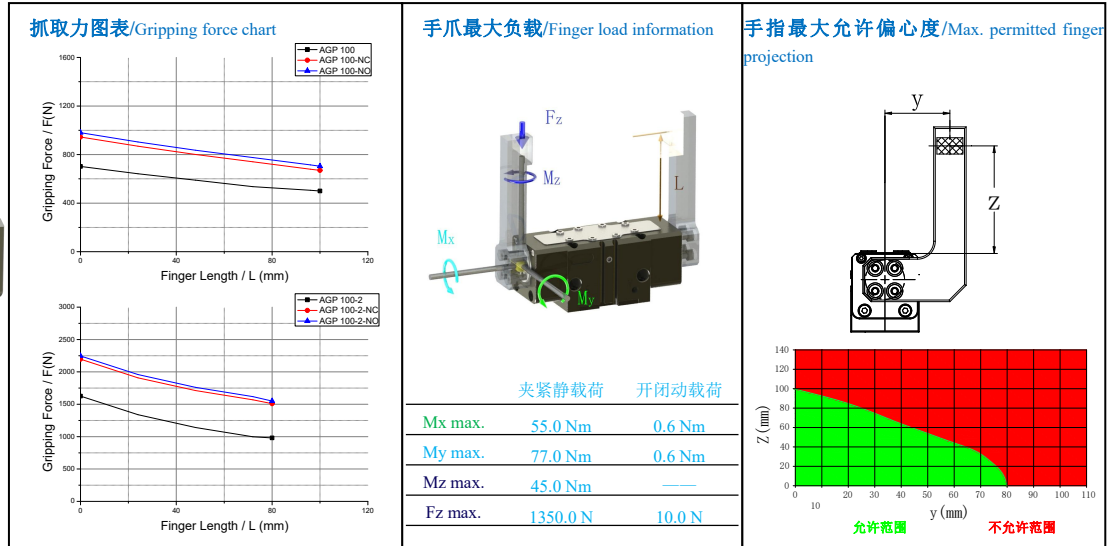
尺寸图/Dimensions



NO/NC 单作用手爪 / NO/NC single-acting gripper



AGP 100



❖所有参数为气压 6bar 下测试/All data measured at 6bar

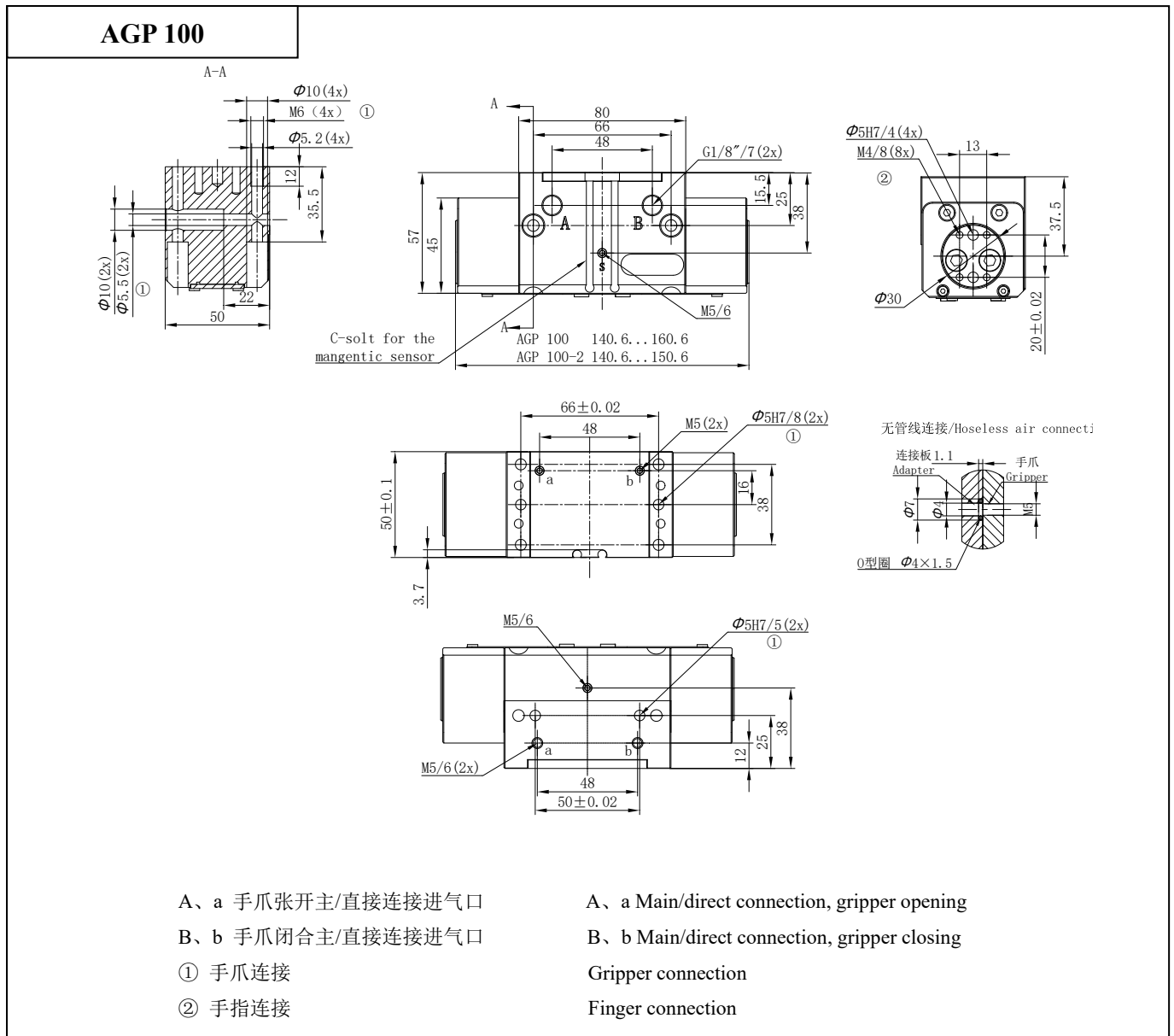
技术资料/Technical data

Description	AGP 100	AGP 100-NC	AGP 100-NO	AGP 100-2	AGP 100-2-NC	AGP 100-2-NO
手指单边行程 Stroke per finger	mm	10	10	10	5	5
理论夹持力-闭 Closing force	夹持力 $F=k*P$ (k:系数, P:bar)	N	128*P	169*P	275*P	366*P
	6bar 气压下夹持力	N	768	1014	1650	2200
理论夹持力-开 Opening force	夹持力 $F=k*P$ (k:系数, P:bar)	N	136*P	177*P	295*P	390*P
	6bar 气压下夹持力	N	816	1062	1770	2340
断气最小夹持力 Min. gripping force without pressure air	N		250	250	570	570
使用压力范围 Max./Min. operating pressure	bar			3/8		
自重 Self weight	Kg	1.1	1.48	1.48	1.1	1.48
空气消耗量/周期 Air consumption per double stroke	cm <sup>3</sup>	40	68	68	40	68
开/闭时间 Closing/opening time	s	0.09/0.09	0.12/0.07	0.07/0.12	0.09/0.09	0.12/0.07
重复精度 Repeat accuracy	mm			0.02		
最大手指长度 Max. permitted finger length	mm	100	100	100	80	80
单个手指最大重量 Max. permitted weight per finger	Kg	0.9	0.9	0.9	0.9	0.9
适应最小/最大环境温度 Min./Max. ambient temperature	°C			标准型 (无) : 5/80 高温型 (-R) : 5/200		
IP 等级 IP class				IP 67		

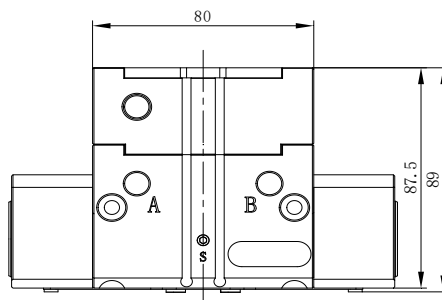
❖P: 空气压力[bar], 手指夹持工件作用点到手指安装面距离 L [mm] \*重复精度: 连续动作 100 次后检测值

❖P: Pressure [bar], L:The distance from the point of the Finger gripping the workpiece to the finger mounting surface [mm] \*Repeat accuracy is defined as the spread of the limit position after 100 consecutive strokes

尺寸图/Dimensions

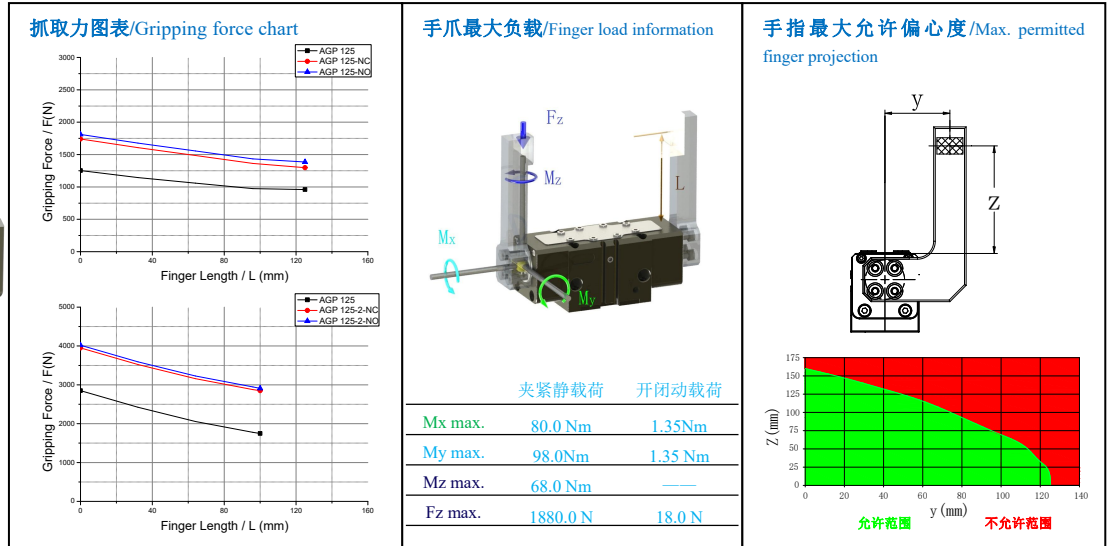


NO/NC 单作用手爪 / NO/NC single-acting gripper





## AGP 125



❖所有参数为气压 6bar 下测试/All data measured at 6bar

### 技术资料/Technical data

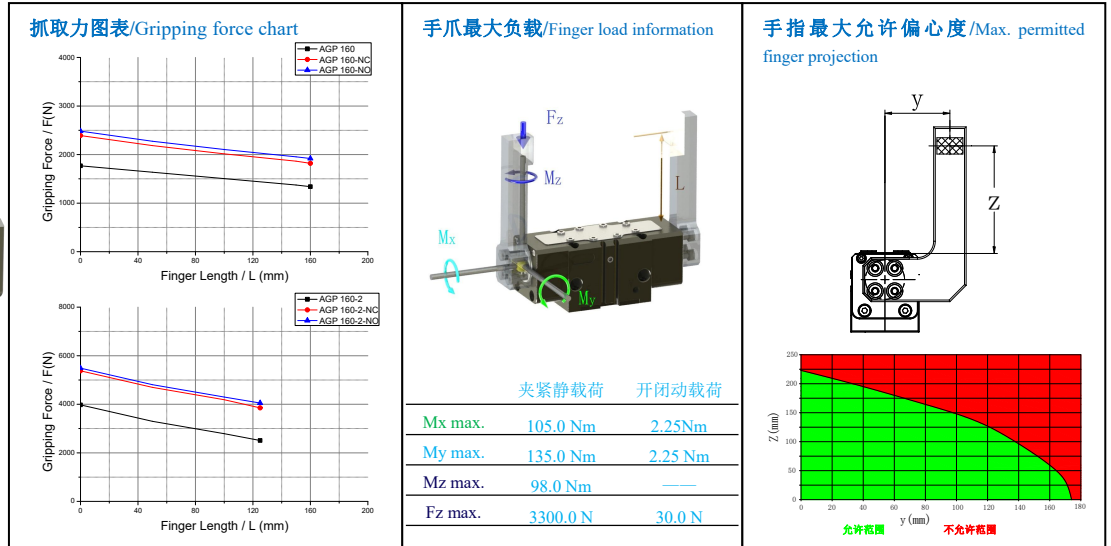
Description	AGP 125	AGP 125-NC	AGP 125-NO	AGP 125-2	AGP 125-2-NC	AGP 125-2-NO
手指单边行程 Stroke per finger	mm	12	12	12	6	6
理论夹持力-闭 Closing force	夹持力 $F=k*P$ (k:系数, P:bar)	N	203*P	284*P	480*P	645*P
	6bar 气压下夹持力	N	1218	1704	2880	3870
理论夹持力-开 Opening force	夹持力 $F=k*P$ (k:系数, P:bar)	N	216*P	297*P	505*P	688*P
	6bar 气压下夹持力	N	1296	1782	3030	4128
断气最小夹持力 Min. gripping force without pressure air	N		490	490		1100
使用压力范围 Max./Min. operating pressure	bar			3/8		
自重 Self weight	Kg	1.65	2.15	2.05	1.65	2.05
空气消耗量/周期 Air consumption per double stroke	cm <sup>3</sup>	80	148	148	80	148
开/闭时间 Closing/opening time	s	0.12/0.12	0.16/0.11	0.11/0.16	0.12/0.12	0.16/0.11
重复精度 Repeat accuracy	mm			0.02		
最大手指长度 Max. permitted finger length	mm	125	125	125	100	100
单个手指最大重量 Max. permitted weight per finger	Kg	1.75	1.75	1.75	1.75	1.75
适应最小/最大环境温度 Min./Max. ambient temperature	°C			标准型 (无) : 5/80 高温型 (-R) : 5/200		
IP 等级 IP class				IP 67		

❖P: 空气压力[bar], 手指夹持工件作用点到手指安装面距离 L [mm] \*重复精度: 连续动作 100 次后检测值

❖P: Pressure [bar], L:The distance from the point of the Finger gripping the workpiece to the finger mounting surface [mm] \*Repeat accuracy is defined as the spread of the limit position after 100 consecutive strokes



## AGP 160



❖所有参数为气压 6bar 下测试/All data measured at 6bar

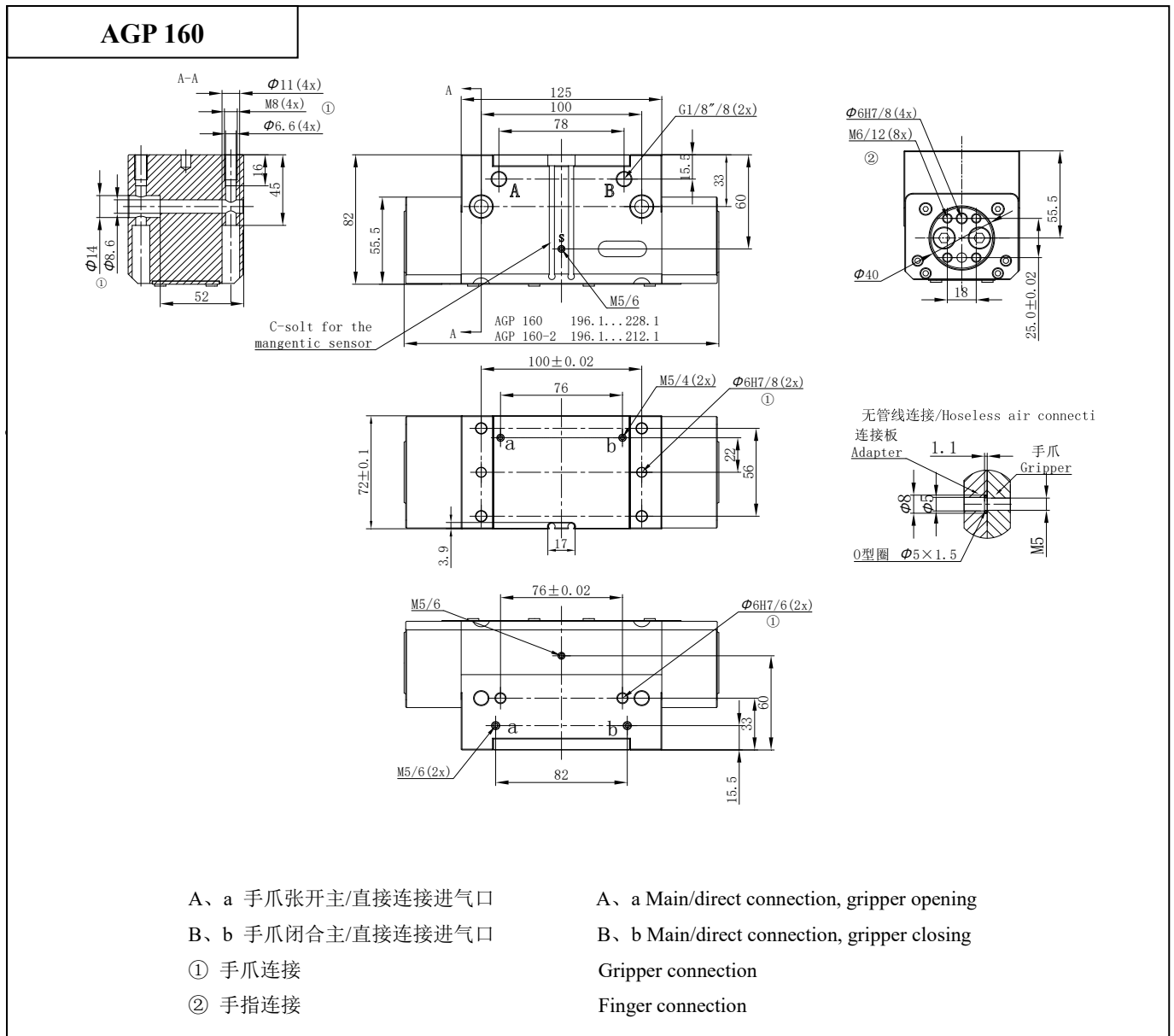
### 技术资料/Technical data

Description	AGP 160	AGP 160-NC	AGP 160-NO	AGP 160-2	AGP 160-2-NC	AGP 160-2-NO
手指单边行程 Stroke per finger	mm	16	16	16	8	8
理论夹持力-闭 Closing force	夹持力 $F=k*P$ (k:系数, P:bar)	N	310*P	415*P	690*P	925*P
	6bar 气压下夹持力	N	1860	2490	4140	5380
理论夹持力-开 Opening force	夹持力 $F=k*P$ (k:系数, P:bar)	N	325*P	430*P	720*P	960*P
	6bar 气压下夹持力	N	1950	2580	4320	5760
断气最小夹持力 Min. gripping force without pressure air	N		650	650		1400
使用压力范围 Max./Min. operating pressure	bar			3/8		
自重 Self weight	Kg	3.0	3.5	3.4	3.0	3.4
空气消耗量/周期 Air consumption per double stroke	cm <sup>3</sup>	268	477	477	268	477
开/闭时间 Closing/opening time	s	0.2/0.2	0.32/0.16	0.32/0.16	0.2/0.2	0.32/0.16
重复精度 Repeat accuracy	mm			0.02		
最大手指长度 Max. permitted finger length	mm	160	160	160	125	125
单个手指最大重量 Max. permitted weight per finger	Kg	3	3	3	3	3
适应最小/最大环境温度 Min./Max. ambient temperature	°C			标准型 (无) : 5/80 高温型 (-R) : 5/200		
IP 等级 IP class				IP 67		

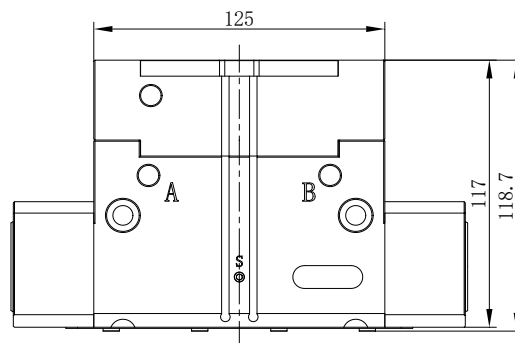
❖P: 空气压力[bar], 手指夹持工件作用点到手指安装面距离 L [mm] \*重复精度: 连续动作 100 次后检测值

❖P: Pressure [bar], L:The distance from the point of the Finger gripping the workpiece to the finger mounting surface [mm] \*Repeat accuracy is defined as the spread of the limit position after 100 consecutive strokes

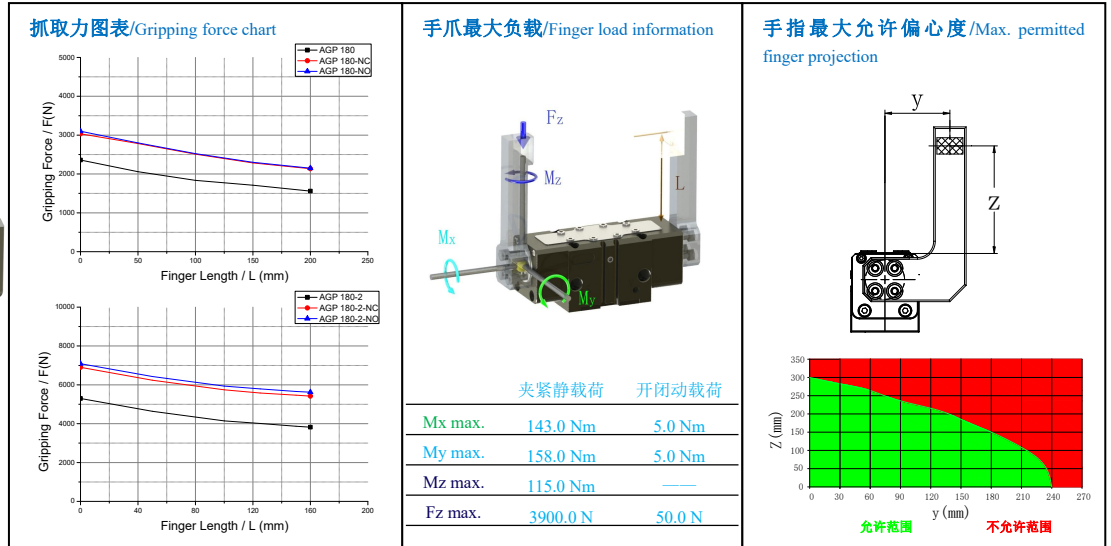
尺寸图/Dimensions



NO/NC 单作用手爪 / NO/NC single-acting gripper



# AGP 180



❖所有参数为气压 6bar 下测试/All data measured at 6bar

## 技术资料/Technical data

Description		AGP 180	AGP 180-NC	AGP 180-NO	AGP 180-2	AGP 180-2-NC	AGP 180-2-NO
手指单边行程 Stroke per finger	mm	18	18	18	9	9	9
理论夹持力-闭 Closing force	夹持力 $F=k*P$ (k:系数, P:bar)	N	417*P	520*P	845*P	1110*P	
	6bar 气压下夹持力	N	2502	3120	5070	6660	
理论夹持力-开 Opening force	夹持力 $F=k*P$ (k:系数, P:bar)	N	445*P	558*P	910*P		1170*P
	6bar 气压下夹持力	N	2670	3348	5460		7020
断气最小夹持力 Min. gripping force without pressure air	N		850	850		1600	1600
使用压力范围 Max./Min. operating pressure	bar				3/8		
自重 Self weight	Kg	6.2	7.4	7.2	6.2	7.4	7.2
空气消耗量/周期 Air consumption per double stroke	cm <sup>3</sup>	360	714	704	360	714	704
开/闭时间 Closing/opening time	s	0.4/0.4	0.75/0.4	0.4/0.75	0.4/0.4	0.75/0.4	0.4/0.75
重复精度 Repeat accuracy	mm				0.02		
最大手指长度 Max. permitted finger length	mm	200	200	200	160	160	160
单个手指最大重量 Max. permitted weight per finger	Kg	5	5	5	5	5	5
适应最小/最大环境温度 Min./Max. ambient temperature	°C				标准型 (无) : 5/80 高温型 (-R) : 5/200		
IP 等级 IP class					IP 67		

❖P: 空气压力[bar], 手指夹持工件作用点到手指安装面距离 L [mm] \*重复精度: 连续动作 100 次后检测值

❖P: Pressure [bar], L:The distance from the point of the Finger gripping the workpiece to the finger mounting surface [mm] \*Repeat accuracy is defined as the spread of the limit position after 100 consecutive strokes