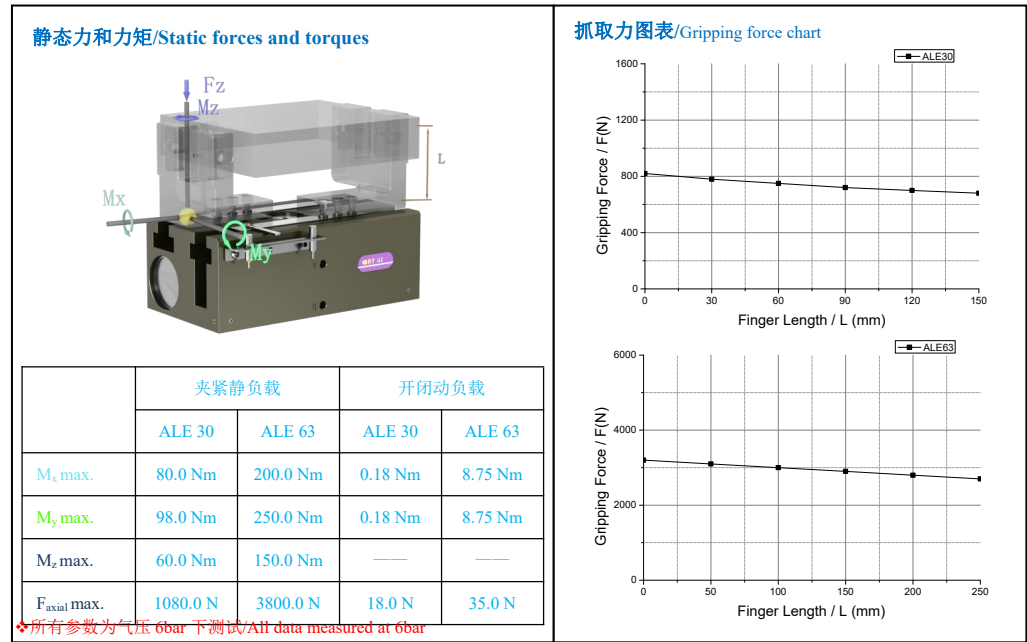


ALE



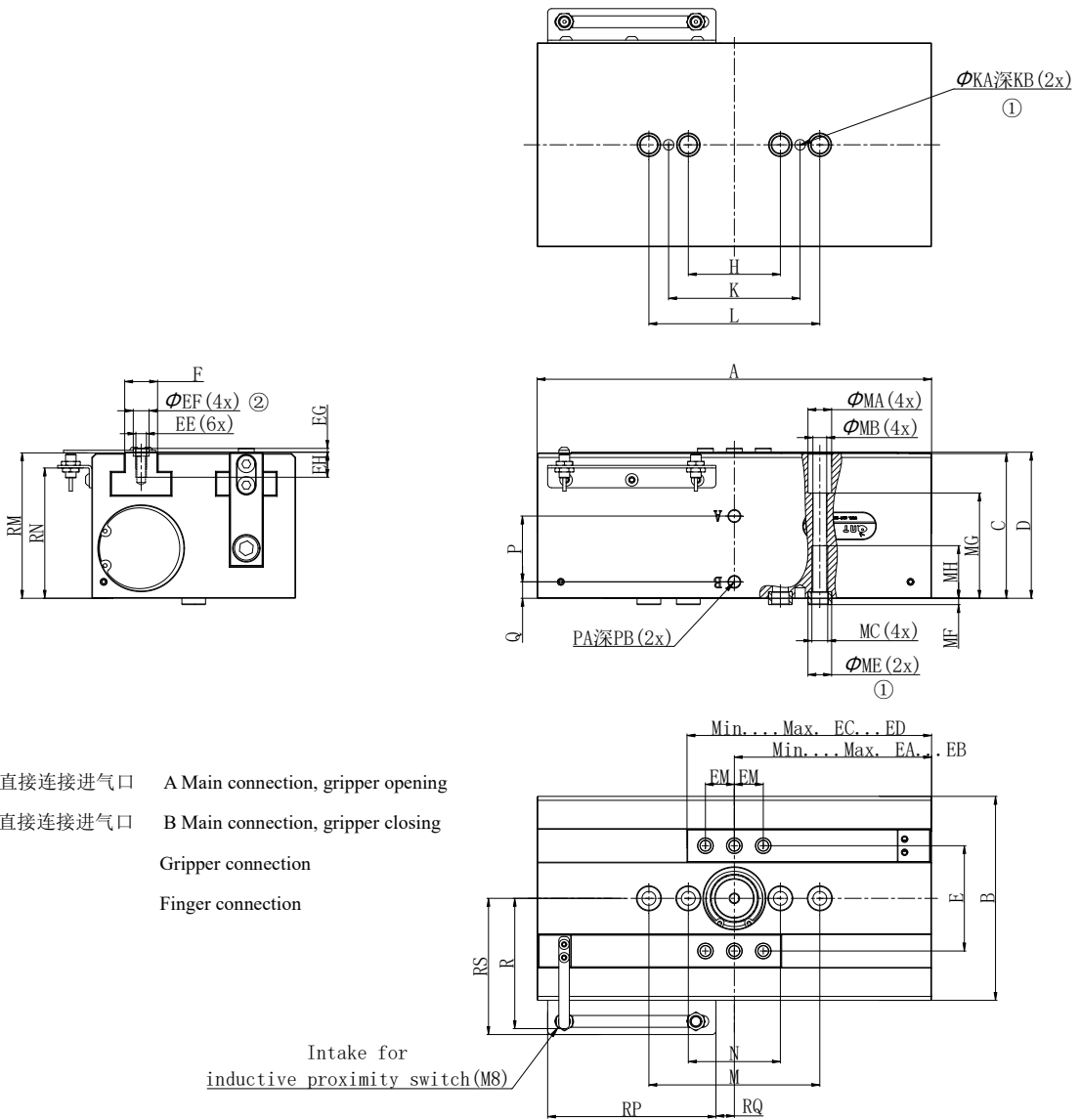
技术资料 Technical data

Description		ALE 30-50	ALE 30-100	ALE 63-50	ALE 63-100
手指单边行程 Stroke per finger	mm	50	100	50	100
理论夹持力-闭 Closing force	夹持力 $F=k*P$ (k:系数, P:bar)	N	136*P	136*P	516*P
	6bar 气压下夹持力	N	816	816	3096
理论夹持力-开 Opening force	夹持力 $F=k*P$ (k:系数, P:bar)	N	120*P	120*P	507.5*P
	6bar 气压下夹持力	N	720	720	3045
使用压力范围 Max./Min. operating pressure	bar	3/8			
自重 Self weight	Kg	3.7	5.5	10	16
空气消耗量/周期 Air consumption per double stroke	cm <sup>3</sup>	172	350	600	1200
开/闭时间 Closing/opening time	s	0.5/0.5	0.8/0.8	0.5/0.5	1.0/1.0
重复精度 Repeat accuracy	mm	0.05	0.05	0.05	0.05
最大手指长度 Max. permitted finger length	mm	100	100	250	250
单个手指最大重量 Max. permitted weight per finger	Kg	1.8	1.8	3.5	3.5
适应最小/最大环境温度 Min./Max. ambient temperature	°C	标准型 : 5/80 高温型 (-R) : 5/200			
IP 等级 IP class		46			

◇P: 空气压力[bar], 手指夹持工件作用点到手指安装面距离 L [mm] \*重复精度: 连续动作 100 次后检测值

◇P: Pressure [bar], L:The distance from the point of the Finger gripping the workpiece to the finger mounting surface [mm] \*Repeat accuracy is defined as the spread of the limit position after 100 consecutive strokes

尺寸图/Dimensions



- A 手爪张开主/直接连接进气口    A Main connection, gripper opening
- B 手爪闭合主/直接连接进气口    B Main connection, gripper closing
- ① 手爪连接    Gripper connection
- ② 手指连接    Finger connection

Intake for inductive proximity switch (M8)

	A	B	C	D	E	EA	EB	EC	ED	EE	EF	EG	EH	EM	F	H	K	KA	KB
ALE30-50	190	95	70	71	46	95	145	120	170	M6	10h7	2.9	12	15±0.02	13.5	70±0.02	100±0.02	6H7	8
ALE30-100	290	95	70	71	46	145	245	170	270	M6	10h7	2.9	12	15±0.02	13.5	70±0.02	100±0.02	6H7	8
ALE63-50	200	155	110	111	80	100	150	135	185	M8	12h7	2.9	16	22±0.02	24	70±0.02	100±0.02	8H7	8
ALE63-100	300	155	110	111	80	150	250	185	285	M8	12h7	2.9	16	22±0.02	24	70±0.02	100±0.02	8H7	8

	L	M	MA	MB	MC	ME	MF	MH	MG	N	P	PA	PB	Q	R	RM	RN	RP	RQ	RS
ALE30-50	130±0.02	130	11	6.6	M8	12h7	2.9	20	50	70	29	G1/8	7	8.5	82	71	63	128	34	73.5
ALE30-100	130±0.02	130	11	6.6	M8	12h7	2.9	20	50	70	29	G1/8	7	8.5	82	71	63	128	16	73.5
ALE63-50	130±0.02	130	18	10.5	M12	18h7	4.8	25	80	70	50	G1/8	7	12.5	99	110.5	99	128	34	103.5
ALE63-100	130±0.02	130	18	10.5	M12	18h7	4.8	25	80	70	50	G1/8	7	12.5	99	110.5	99	128	14	103.5