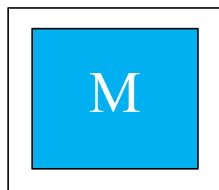
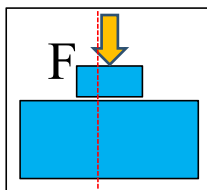


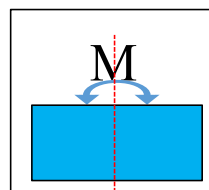
Sizes
40...80



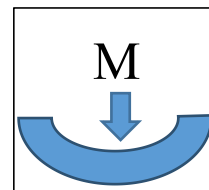
Weight
1.67...21Kg



Axial Force
1800...3400N

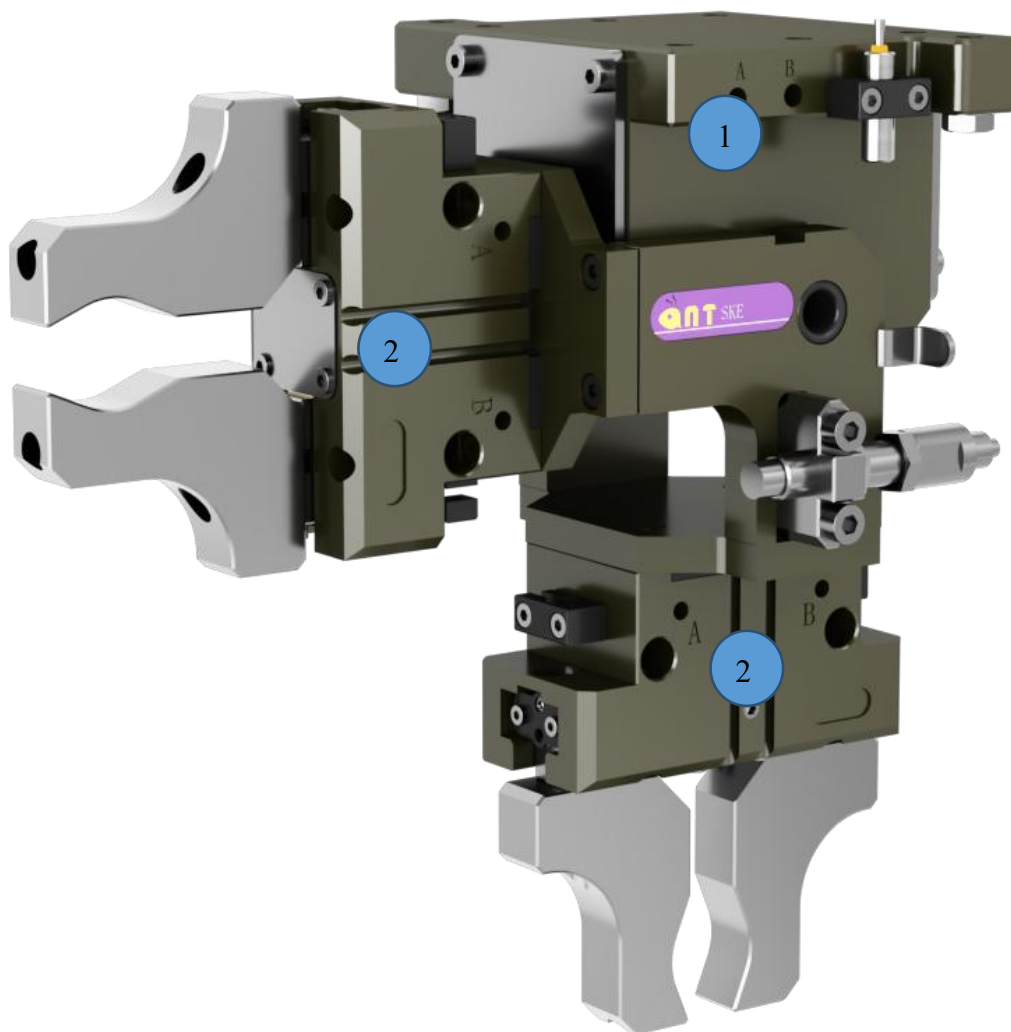


Torque
5.5...40Nm



Bending moment
90...230Nm

应用案例 / Application example



- ① SKE 40 旋转手腕
- ② AGN 80 二爪张角式手爪

SKE 40 Swivel Head
AGN 80 2-Finger Parallel Gripper

旋转手腕 / Swivel head

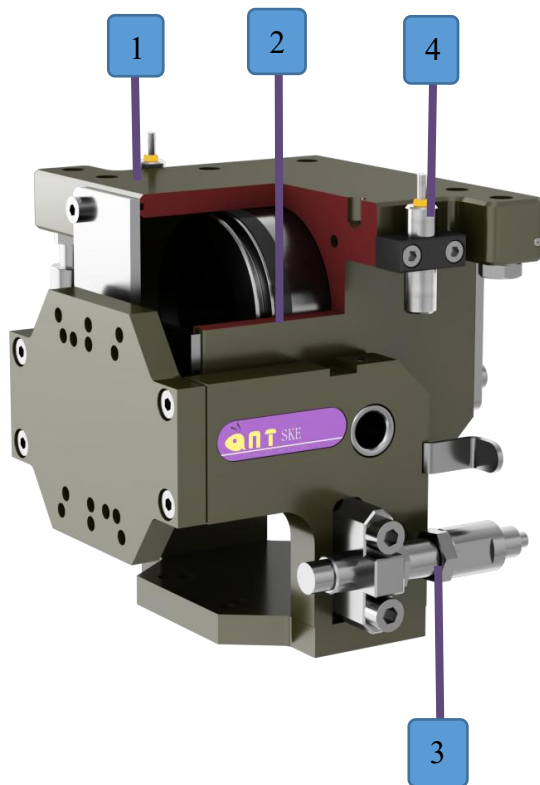
原理

- 压缩空气推动齿条活塞
- 齿条驱动齿轮轴转动
- 旋转角度 90°

Principle

- Air pressure drives the piston racks
- The piston racks simultaneously drive the pinion gear which is attached to the flange
- Swivel angle 90°

剖视图 / Sectional diagram



1 本体 Housing

涂层处理的高强度铝合金
High-strength aluminum alloy, anodized

2 传动方式 Transmission Model

齿轮齿条传动方式
Rotary actuator of rack & pinion type

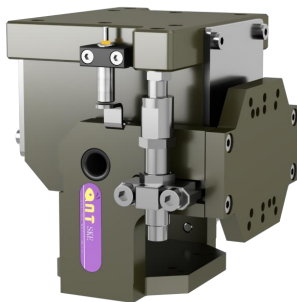
3 缓冲模块 The buffer module

油压缓冲结构
Hydraulic shock absorber

4 接近开关安装位 Mounting block

安装接近开关
Intake for inductive proximity switch

传感系统 Sensor system

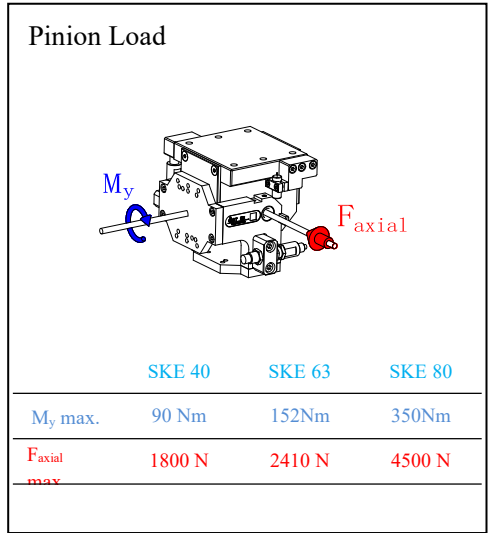
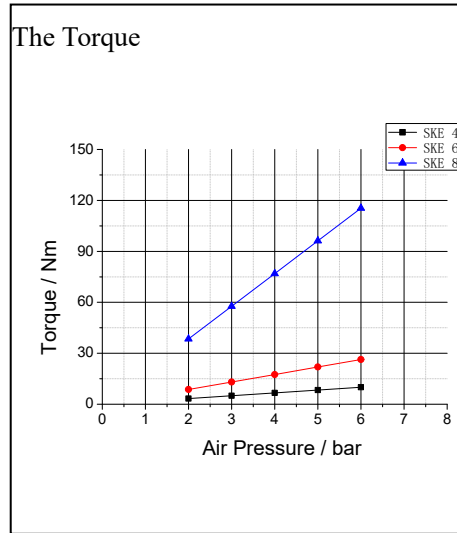
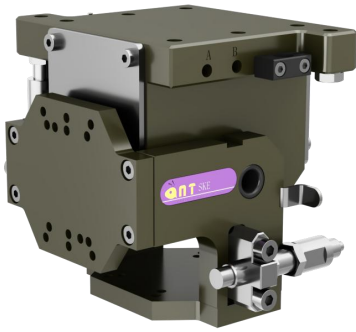


接近开关 / Proximity switch (选购/Order)

适用型号(NO.)	SKE 40/SKE 63/SKE 80
NPN	WPS-8GM35N
PNP	WPS-8GM35P

- 传感器成对使用
- Two sensors (NO contacts) are required for each swivel unit.

SKE



所有参数为气压 6bar 下测试/All data measured at 6bar

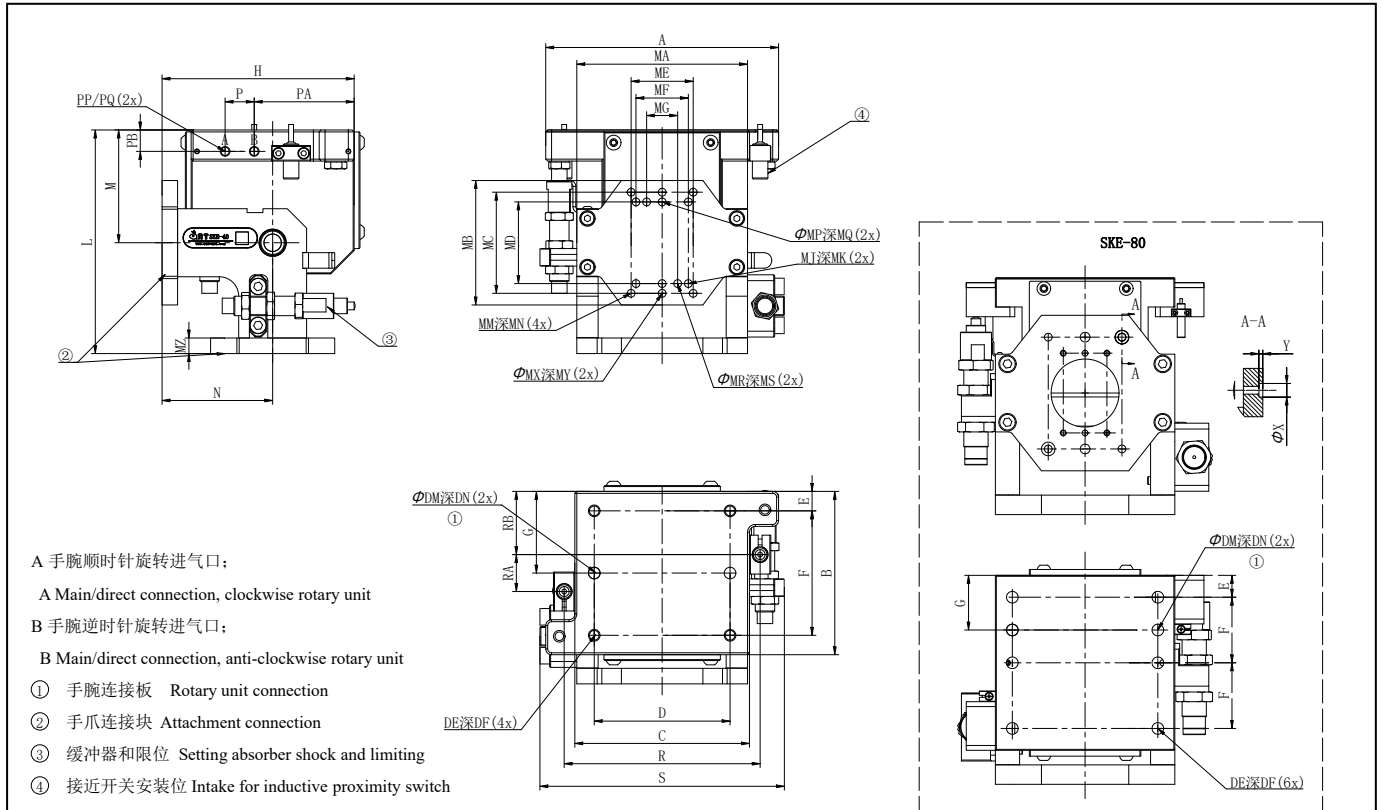
技术资料 Technical data

Description		SKE 40	SKE 63	SKE 80
扭矩 Torque	旋转扭矩 $T=k*P$ (k:系数, P:bar) [Nm]	1.5*P	4.6*P	19.1*P
	6bar 气压下旋转扭矩 [Nm]	9	27.6	114.6
旋转角度 Rotating angle	[°]	90	90	90
调整角度 Adjustability of end positions	[°]	5.0	5.0	5.0
IP 等级 IP class		64	64	64
自重 Self weight	[Kg]	1.97	7.2	21
旋转时间 Swiveling time with middle attached load	[s]	1	1.5	2
最大使用压力 Maximum pressure	[bar]	6	6	6
最小使用压力 Minimum pressure	[bar]	2	2	2
空气消耗量 Air consumption per double stroke	cm ³	112	221	498
适应最小/最大环境温度 Min./max. ambient temperature	[°C]	5~60	5~60	5~60
重复精度 Repeat accuracy	[°]	0.05	0.05	0.08
缓冲装置 Buffering mode		液压缓冲器 /Hydraulic damper	液压缓冲器 /Hydraulic damper	液压缓冲器 /Hydraulic damper

◇P: 空气压力[bar] *重复精度: 连续动作 100 次后检测值

◇P: Pressure[bar] *Repeat accuracy is defined as the spread of the limit position after 100 consecutive strokes

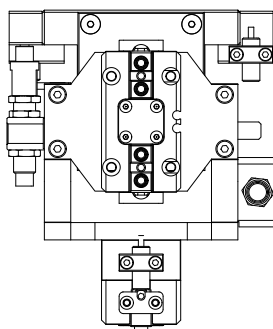
尺寸图/Dimensions



型号	A	B	C	D	DE	DF	DM	DN	E	F	G	H	L	M	MA	MB	MC	MD	ME	MF	MG	MJ	MK
SKE 40	120	84	90	70±0.02	M6	12	6H7	6	10	64	42	99	115	58	88	64	52±0.02	42±0.02	32	27	16±0.02	M4	8
SKE 63	179	125	135	100±0.02	M8	16	8H7	8	21.5	82	62.5	147.5	171	86	135	100	82±0.02	66±0.02	45	38	—	M5	12
SKE 80	245	186	185	150±0.02	M12	24	12H	12	25.5	67.5	59.2	218	243.5	118.5	185	160	115±0.02	82±0.02	76±0.02	45	—	M6	12

型号	MM	MN	MP	MQ	MR	MS	MX	MY	MZ	N	P	PA	PB	PP	PQ	R	RA	RB	S	X	Y
SKE 40	M4	8	4H7	4	4H7	4	4H7	4	8	57	15	51.5	11	M5	6	101	19	32.5	126	—	—
SKE 63	M6	12	5H7	8	—	—	6H7	8	12	85	22	70.5	14	G1/8	7	146	33	46	186	—	—
SKE 80	M8	16	6H7	9	—	—	10H7	10	20	125	28	108	22	G1/8	7	198	75	55.5	255	14H7	4

适配的手爪 / Adapter for gripper assembly



型号	手爪
SKE 40	AGN 66/AGN80/AWG80
SKE 63	AGN 100/AGN160/AWG100/AWG160
SKE 80	AGN 160 /AGN180/AWG160/AWG180