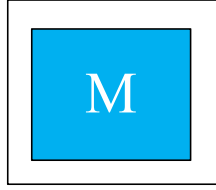
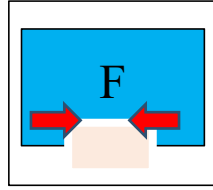


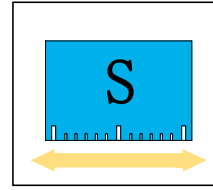
Series
66.....180



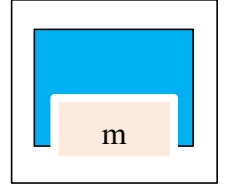
Weight
0.55...11.2Kg



Gripping Force
660...15900N



Stroke per finger
6...18mm



Workpiece weight
3..35Kg

应用案例 / Application example



① AXN 100

4 指定心手爪

AXN 100 4-Finger Concentric Gripper

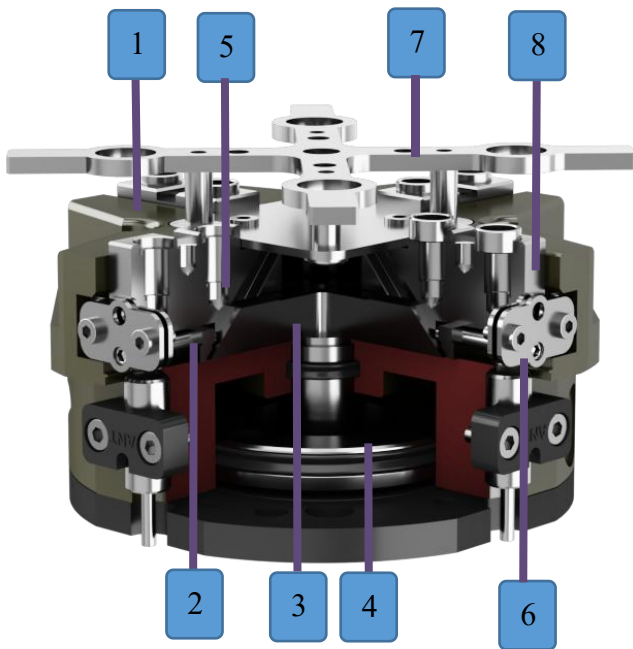
4 指定心手爪 / 4-Finger Concentric Gripper 原理

- 压缩空气推动圆形活塞上下运动
- 楔形将驱动力转化为夹持力
- 滑块同步运动

Principle

- The Circular piston is moved up or down by means of compressed air
- High gripping force as a result of optimal direction change of driving force into gripping force
- Synchronous gripping movement of both base jaws

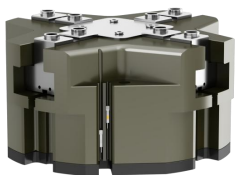
剖视图 / Sectional diagram



- 1 **本体 Housing**
涂层处理的高强度铝合金
High-strength aluminum alloy, anodiXed
- 2 **T 型导轨 T-slot guidance**
重负载导轨：负载更长的手指长度
Heavy load rails, robust base jaw guidance for extremely long gripper fingers
- 3 **传动方式 Transmission Model**
高动力传输
High power transmission
- 4 **驱动部分 Energy supply**
圆形活塞，提供更大的夹持力
Large Circular piston: can have greater force
- 5 **滑块 Jaw**
连接工件手指
For the connection of the workpiece-specific gripper fingers
- 6 **传感系统 Sensor system**
接近式传感器
Of gripper jaw via proximity switch
- 7 **弹簧顶料装置 Spring ejector device**
在手爪打开时弹簧提供推力保持负载
For Spring-supported positioning of the workpiece against a stop after the gripper has opened.
- 8 **可调感应块 Adjustable induction block**
便捷可调感应凸块
Convenience, adjustable switch cam

传感系统 Sensor system

磁性传感器 / Magnetic Sensor (选购/Order)



型号(NO.)

NPN WMS-M9N

PNP WMS-M9P

- 磁性传感器不适用于连接具有磁性的连接板或环境为磁场环境和环境温度大于 80℃ 下使用/The magnetic sensors are not suitable for connecting the magnetic plate or th is magnetic field and the temperature is greater than 80℃.

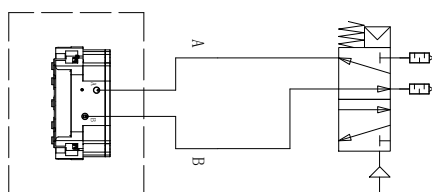
接近开关 / Proximity switch (选购/Order)



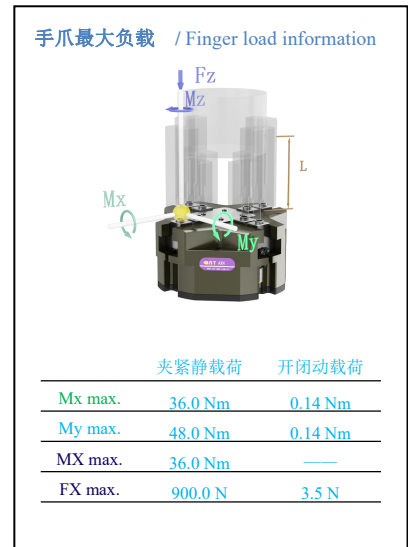
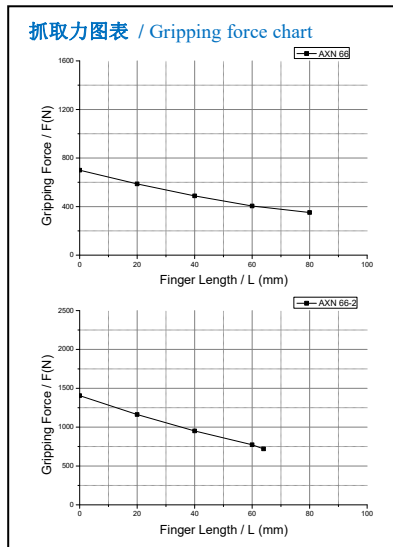
手爪适配气管及电磁阀有效截面积建议值

型号	AXN		
	66/80	100/125	160/180
气管直径 (mm)	≥6	≥8	≥10
电磁阀有效截面积 (mm ²)	≥17.0	≥28.0	≥48.0

手爪气路连接原理图



AXN 66



❖所有参数为气压 6bar 下测试/All data measured at 6bar

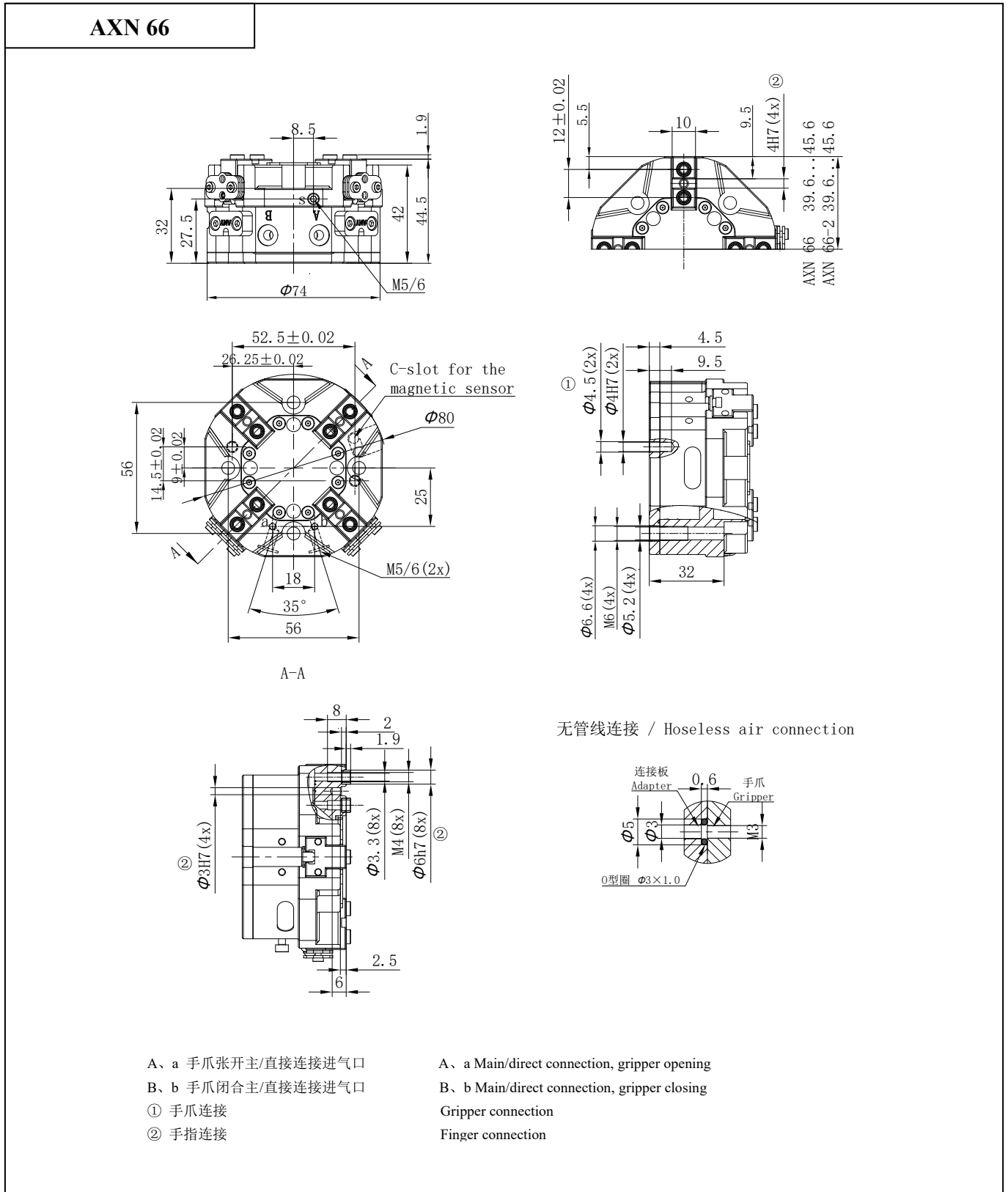
技术资料/Technical data

Description		AXN 66	AXN 66-2
手指单边行程 Stroke per finger	mm	6	3
理论夹持力-闭 Closing force	夹持力 $F=k*P$ (k:系数, P:bar)	110*P	233*P
	6bar 气压下夹持力	660	1398
理论夹持力-开 Opening force	夹持力 $F=k*P$ (k:系数, P:bar)	127*P	246*P
	6bar 气压下夹持力	750	1476
使用压力范围 Max./Min. operating pressure	bar	3/8	
自重 Self weight	Kg	0.55	0.55
空气消耗量/周期 Air consumption per double stroke	cm ³	21.5	21.5
开/闭时间 Closing/opening time	s	0.03/0.03	0.03/0.03
重复精度 Repeat accuracy	mm	0.01	
最大手指长度 Max. permitted finger length	mm	80	64
单个手指最大重量 Max. permitted weight per finger	Kg	0.35	0.35
适应最小/最大环境温度 Min./Max. ambient temperature	°C	标准型 (无) : 5/80 高温型 (-R) : 5/200	
IP 等级 IP class		IP 45	

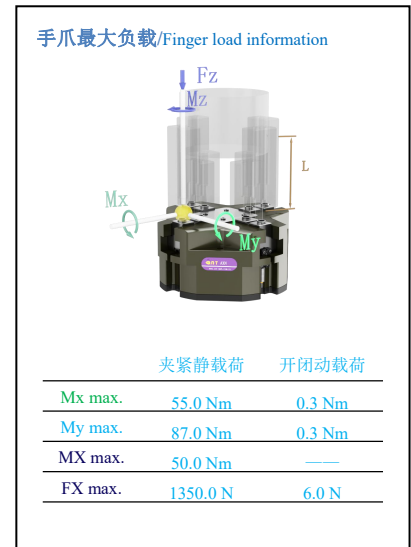
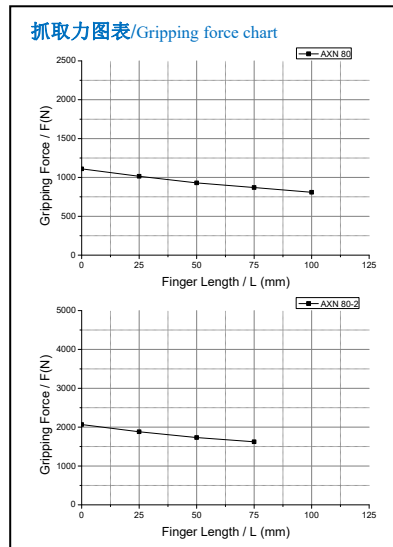
❖P: 空气压力[bar], 手指夹持工件作用点到手指安装面距离 L [mm] *重复精度: 连续动作 100 次后检测值

❖P: Pressure [bar], L:The distance from the point of the Finger gripping the workpiece to the finger mounting surface [mm] *Repeat accuracy is defined as the spread of the limit position after 100 consecutive strokes

尺寸图/Dimensions



AXN 80



❖所有参数为气压 6bar 下测试/All data measured at 6bar

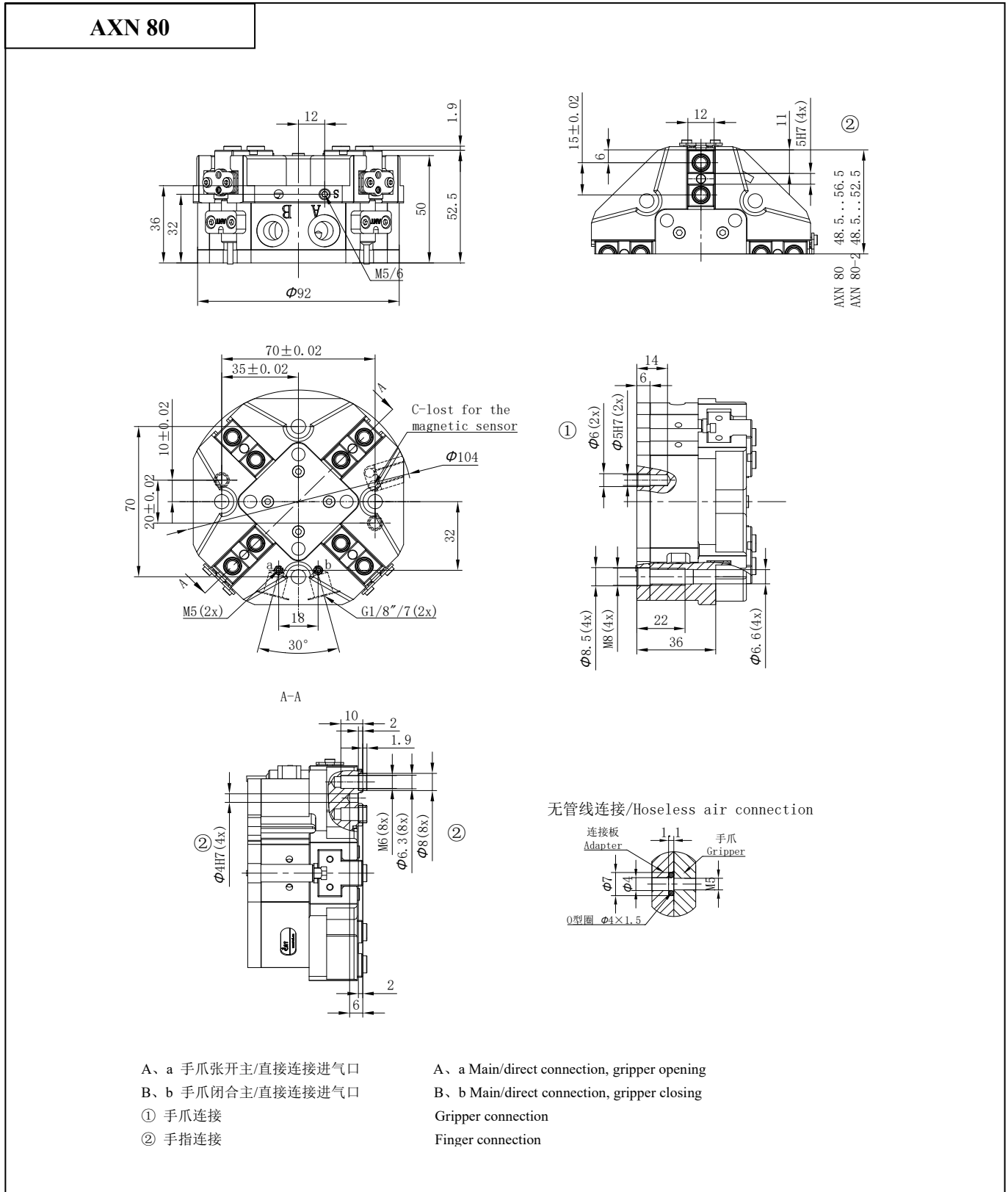
技术资料/Technical data

Description		AXN 80	AXN 80-2
手指单边行程 Stroke per finger	mm	8	4
理论夹持力-闭 Closing force	夹持力 $F=k*P$ (k:系数, P:bar)	N	168*P
	6bar 气压下夹持力	N	1008
理论夹持力-开 Opening force	夹持力 $F=k*P$ (k:系数, P:bar)	N	181*P
	6bar 气压下夹持力	N	1086
使用压力范围 Max./Min. operating pressure	bar	3/8	
自重 Self weight	Kg	1.0	1.0
空气消耗量/周期 Air consumption per double stroke	cm ³	46	46
开/闭时间 Closing/opening time	s	0.05/0.05	0.05/0.05
重复精度 Repeat accuracy	mm	0.01	
最大手指长度 Max. permitted finger length	mm	100	75
单个手指最大重量 Max. permitted weight per finger	Kg	0.6	0.6
适应最小/最大环境温度 Min./Max. ambient temperature	°C	标准型 (无) : 5/80 高温型 (-R) : 5/200	
IP 等级 IP class		IP 45	

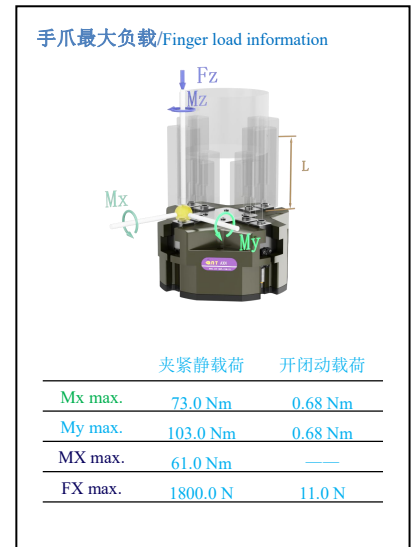
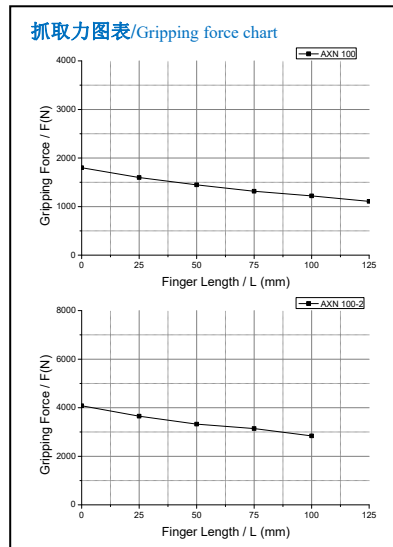
❖P: 空气压力[bar], 手指夹持工件作用点到手指安装面距离 L [mm] *重复精度: 连续动作 100 次后检测值

❖P: Pressure [bar], L: The distance from the point of the Finger gripping the workpiece to the finger mounting surface [mm] *Repeat accuracy is defined as the spread of the limit position after 100 consecutive strokes

尺寸图/Dimensions



AXN 100



❖所有参数为气压 6bar 下测试/All data measured at 6bar

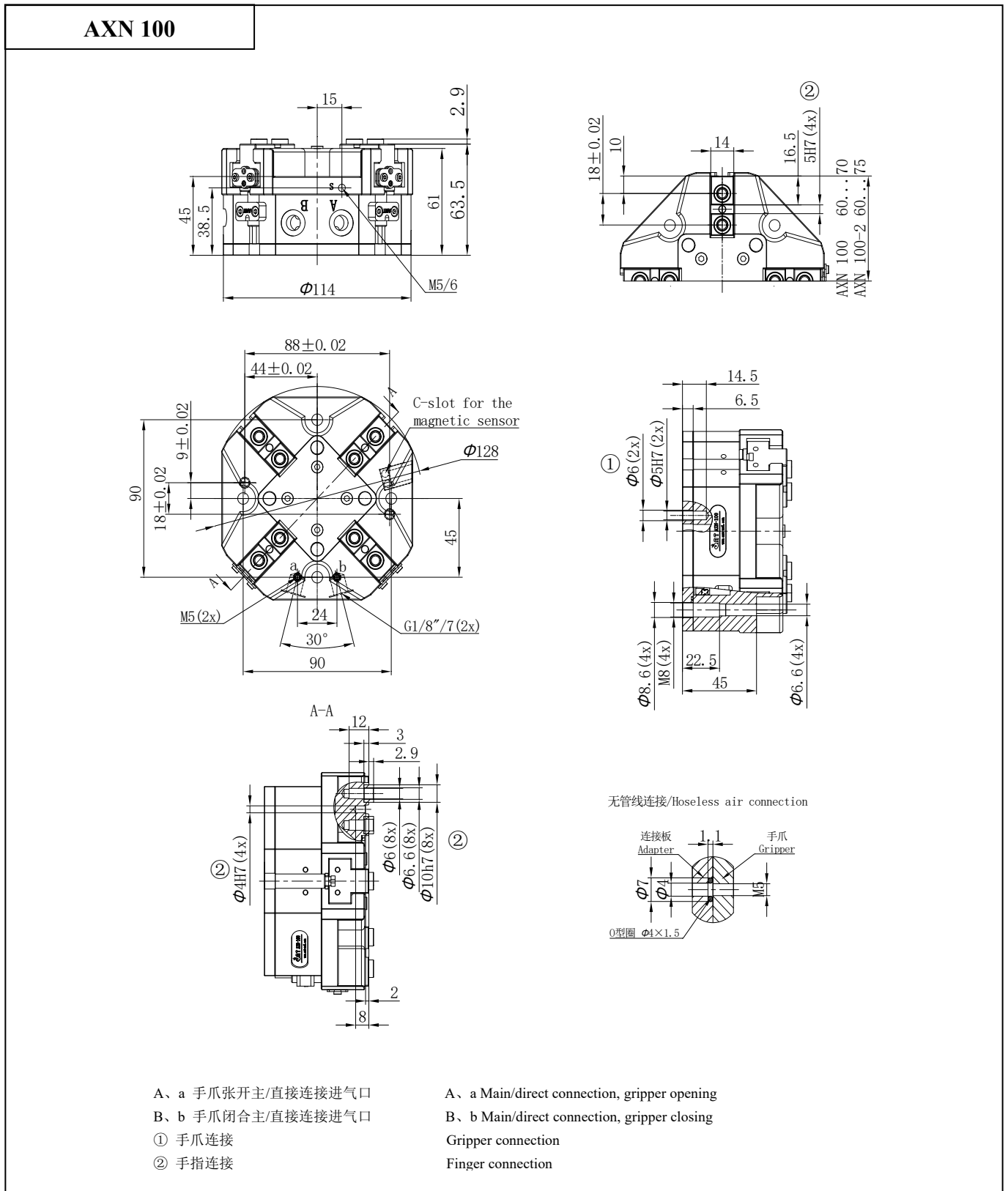
技术资料/Technical data

Description		AXN 100	AXN 100-2
手指单边行程 Stroke per finger	mm	10	5
理论夹持力-闭 Closing force	夹持力 $F=k*P$ (k:系数, P:bar)	N	300*P
	6bar 气压下夹持力	N	1800
理论夹持力-开 Opening force	夹持力 $F=k*P$ (k:系数, P:bar)	N	317*P
	6bar 气压下夹持力	N	1902
使用压力范围 Max./Min. operating pressure	bar	3/8	
自重 Self weight	Kg	1.85	1.85
空气消耗量/周期 Air consumption per double stroke	cm ³	100	100
开/闭时间 Closing/opening time	s	0.1/0.1	0.1/0.1
重复精度 Repeat accuracy	mm	0.01	
最大手指长度 Max. permitted finger length	mm	125	100
单个手指最大重量 Max. permitted weight per finger	Kg	1.1	1.1
适应最小/最大环境温度 Min./Max. ambient temperature	°C	标准型 (无) : 5/80 高温型 (-R) : 5/200	
IP 等级 IP class		IP 45	

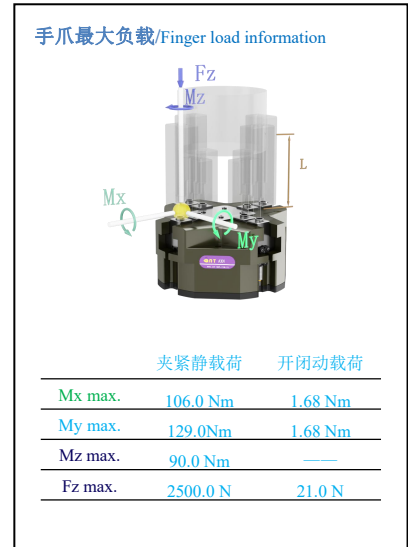
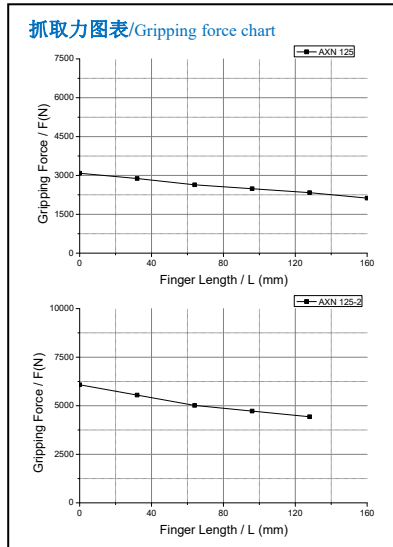
❖P: 空气压力[bar], 手指夹持工件作用点到手指安装面距离 L [mm] *重复精度: 连续动作 100 次后检测值

❖P: Pressure [bar], L: The distance from the point of the Finger gripping the workpiece to the finger mounting surface [mm] *Repeat accuracy is defined as the spread of the limit position after 100 consecutive strokes

尺寸图/Dimensions



AXN 125



❖所有参数为气压 6bar 下测试/All data measured at 6bar

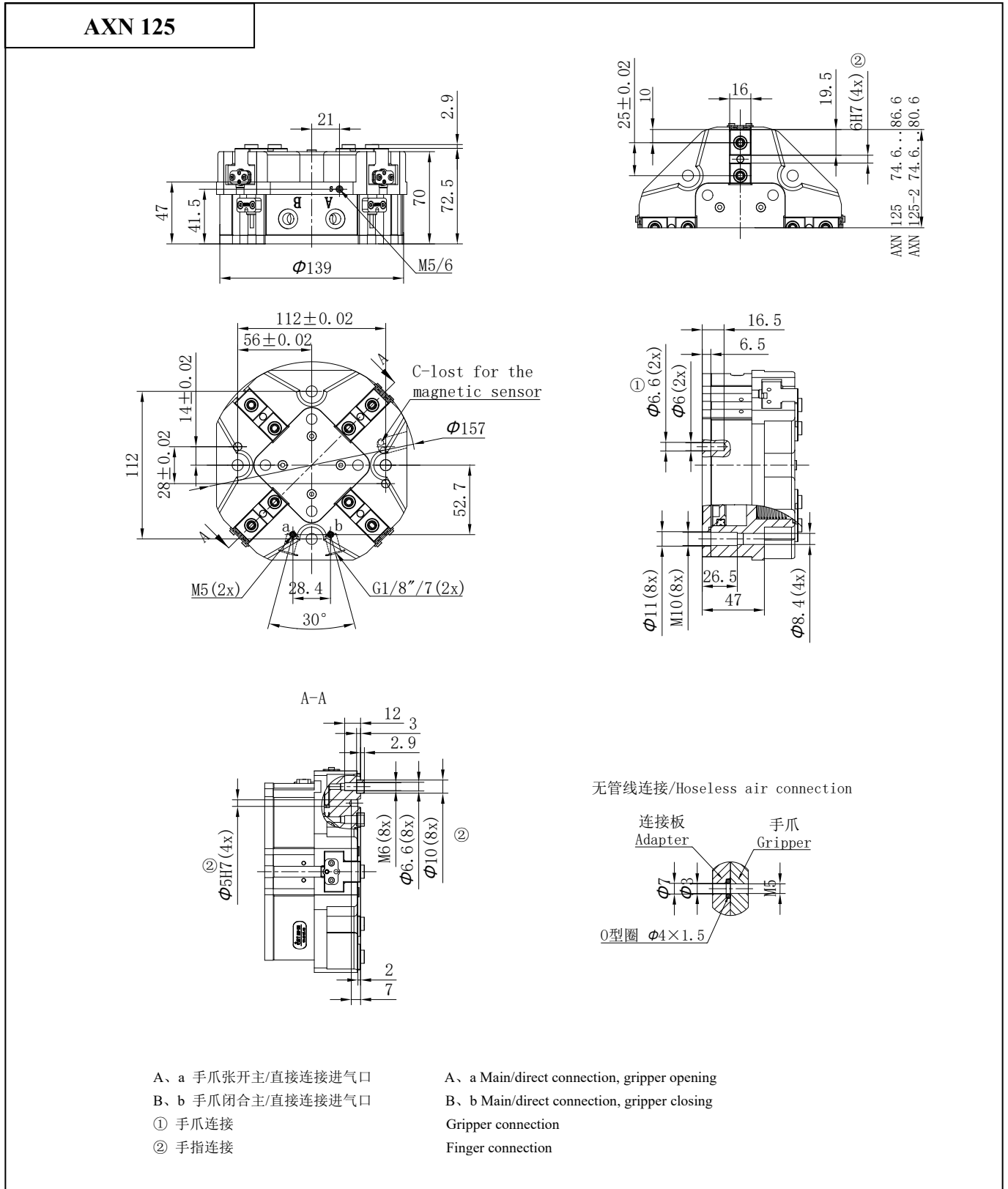
技术资料/Technical data

Description		AZN 125	AZN 125-2
手指单边行程 Stroke per finger	mm	12	6
理论夹持力-闭 Closing force	夹持力 $F=k*P$ (k:系数, P:bar)	N	491*P
	6bar 气压下夹持力	N	3096
理论夹持力-开 Opening force	夹持力 $F=k*P$ (k:系数, P:bar)	N	533*P
	6bar 气压下夹持力	N	3198
使用压力范围 Max./Min. operating pressure	bar	3/8	
自重 Self weight	Kg	3.15	3.15
空气消耗量/周期 Air consumption per double stroke	cm ³	190	190
开/闭时间 Closing/opening time	s	0.2/0.2	0.2/0.2
重复精度 Repeat accuracy	mm	0.01	
最大手指长度 Max. permitted finger length	mm	160	125
单个手指最大重量 Max. permitted weight per finger	Kg	2.1	2.1
适应最小/最大环境温度 Min./Max. ambient temperature	°C	标准型 (无) : 5/80 高温型 (-R) : 5/200	
IP 等级 IP class		IP 45	

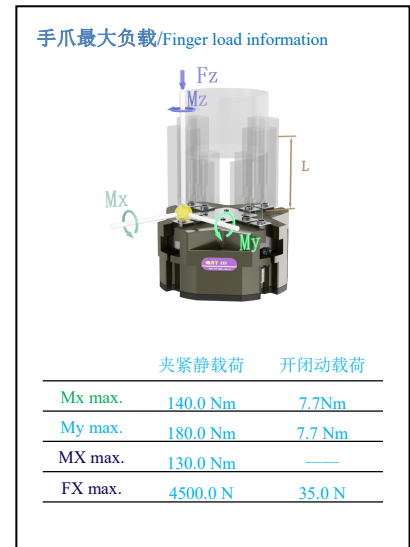
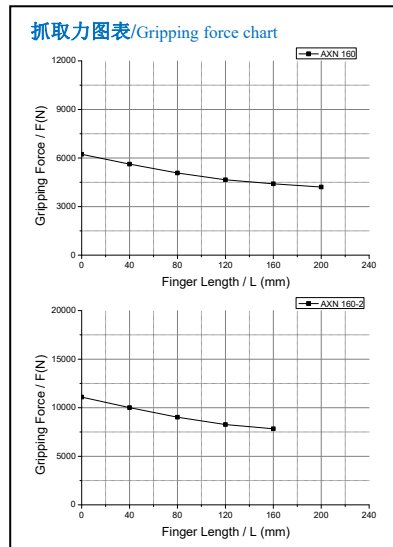
❖P: 空气压力[bar], 手指夹持工件作用点到手指安装面距离 L [mm] *重复精度: 连续动作 100 次后检测值

❖P: Pressure [bar], L:The distance from the point of the Finger gripping the workpiece to the finger mounting surface [mm] *Repeat accuracy is defined as the spread of the limit position after 100 consecutive strokes

尺寸图/Dimensions



AXN 160



❖所有参数为气压 6bar 下测试/All data measured at 6bar

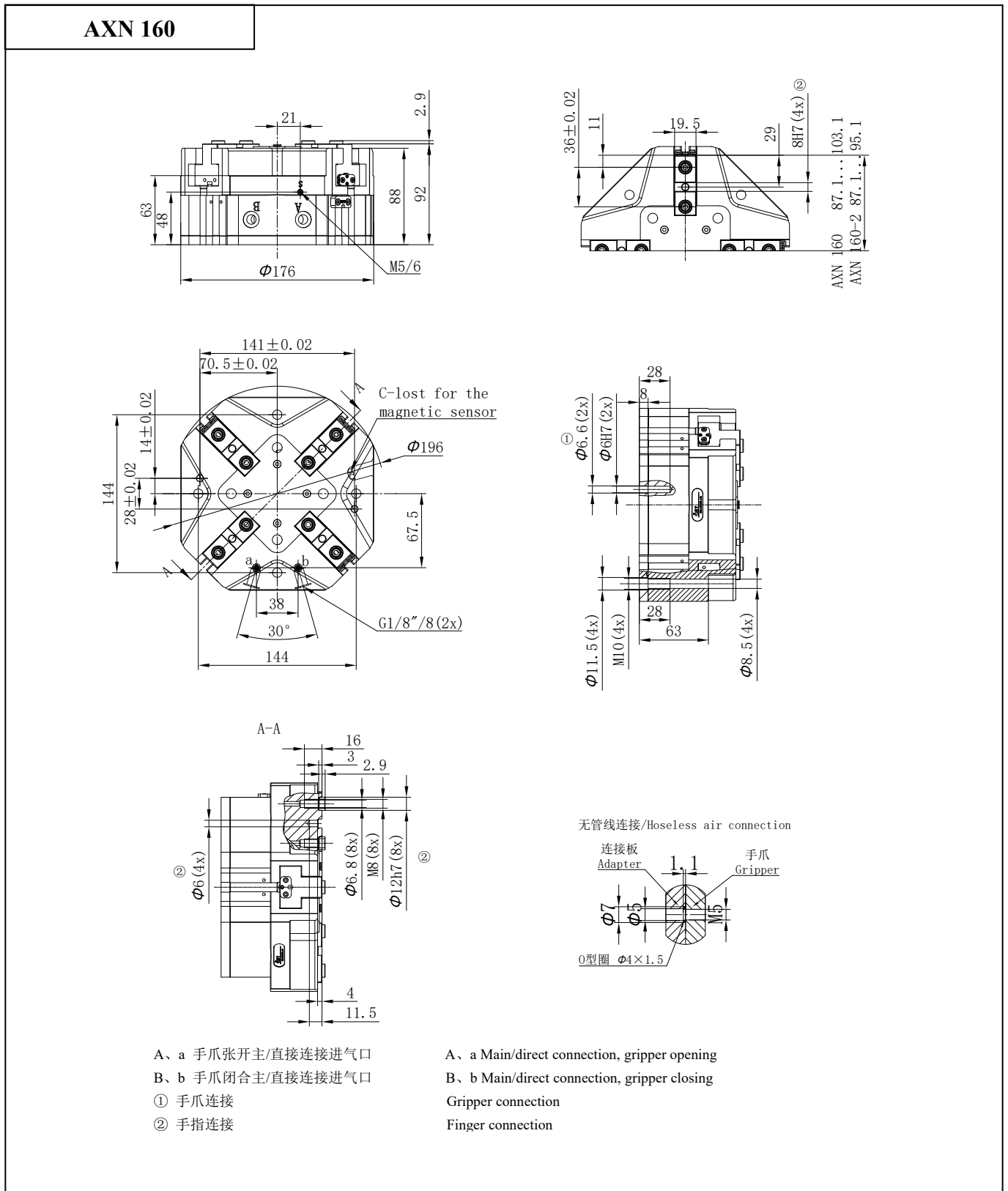
技术资料/Technical data

Description		AXN 160	AXN 160-2
手指单边行程 Stroke per finger	mm	16	8
理论夹持力-闭 Closing force	夹持力 $F=k*P$ (k:系数, P:bar)	N	1030*P
	6bar 气压下夹持力	N	6180
理论夹持力-开 Opening force	夹持力 $F=k*P$ (k:系数, P:bar)	N	1050*P
	6bar 气压下夹持力	N	6300
使用压力范围 Max./Min. operating pressure	bar	3/8	
自重 Self weight	Kg	6.2	6.2
空气消耗量/周期 Air consumption per double stroke	cm ³	485	485
开/闭时间 Closing/opening time	s	0.5/0.5	0.5/0.5
重复精度 Repeat accuracy	mm	0.02	
最大手指长度 Max. permitted finger length	mm	200	160
单个手指最大重量 Max. permitted weight per finger	Kg	3.5	3.5
适应最小/最大环境温度 Min./Max. ambient temperature	°C	标准型 (无) : 5/80 高温型 (-R) : 5/200	
IP 等级 IP class		IP 45	

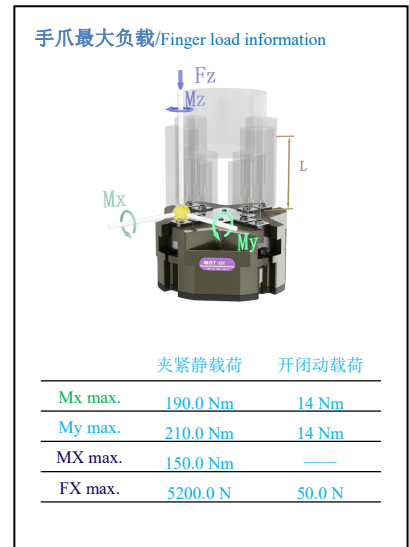
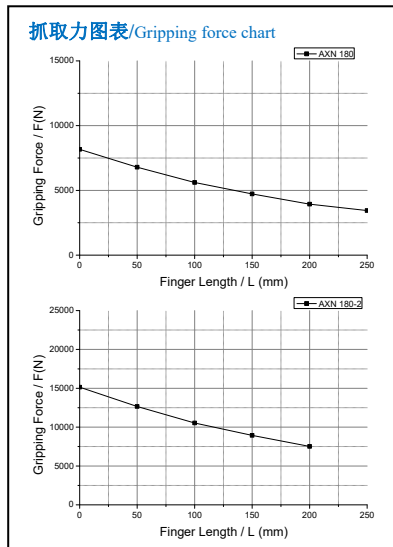
❖P: 空气压力[bar], 手指夹持工件作用点到手指安装面距离 L [mm] *重复精度: 连续动作 100 次后检测值

❖P: Pressure [bar], L: The distance from the point of the Finger gripping the workpiece to the finger mounting surface [mm] *Repeat accuracy is defined as the spread of the limit position after 100 consecutive strokes

尺寸图/Dimensions



AXN 180



❖所有参数为气压 6bar 下测试/All data measured at 6bar

技术资料/Technical data

Description		AXN 180	AXN 180-2
手指单边行程 Stroke per finger	mm	18	9
理论夹持力-闭 Closing force	夹持力 $F=k*P$ (k:系数, P:bar)	N	1315*P
	6bar 气压下夹持力	N	7890
理论夹持力-开 Opening force	夹持力 $F=k*P$ (k:系数, P:bar)	N	1370*P
	6bar 气压下夹持力	N	8220
使用压力范围 Max./Min. operating pressure	bar	3/8	
自重 Self weight	Kg	11	11.2
空气消耗量/周期 Air consumption per double stroke	cm ³	855	855
开/闭时间 Closing/opening time	s	0.5/0.5	0.5/0.5
重复精度 Repeat accuracy	mm	0.02	
最大手指长度 Max. permitted finger length	mm	250	200
单个手指最大重量 Max. permitted weight per finger	Kg	5	5
适应最小/最大环境温度 Min./Max. ambient temperature	°C	标准型 (无) : 5/80 高温型 (-R) : 5/200	
IP 等级 IP class		IP 45	

❖P: 空气压力[bar], 手指夹持工件作用点到手指安装面距离 L [mm] *重复精度: 连续动作 100 次后检测值

❖P: Pressure [bar], L: The distance from the point of the Finger gripping the workpiece to the finger mounting surface [mm] *Repeat accuracy is defined as the spread of the limit position after 100 consecutive strokes

尺寸图/Dimensions

