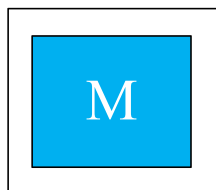
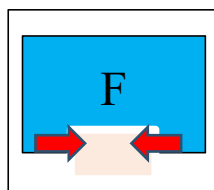


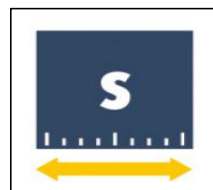
Sizes
20...250



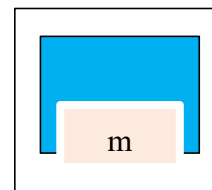
Weight
22...135Kg



Gripping Force
5000...2000 N



Stroke finger
50...200



Workpiece weight
20...250Kg

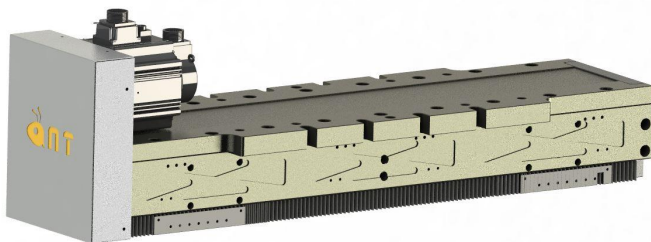
应用案例 / Application example



① AGDK-250-200 电控二指平动手爪

AGDK-250-200 Electrical 2-Finger Parallel Gripper

AGDK 电控二指平动手爪 / AGDK Electrical 2-Finger Parallel Gripper



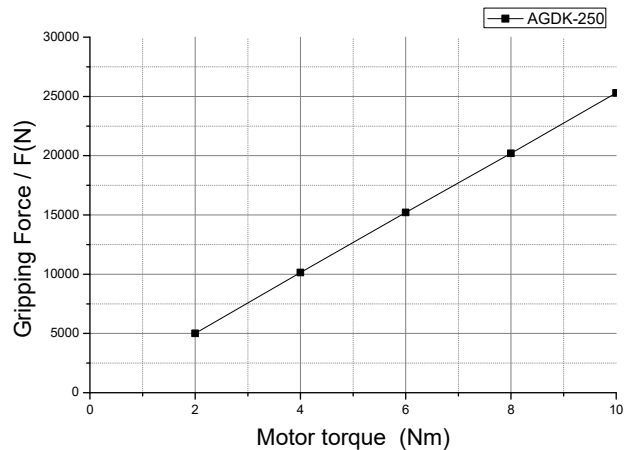
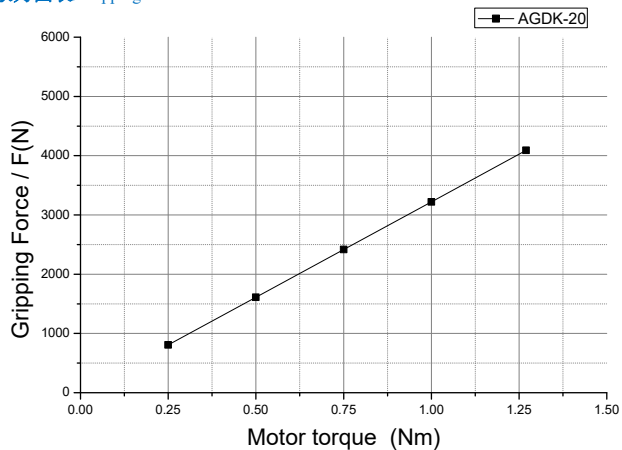
电控手爪体积轻巧、行程范围大
手爪具有以下特征：

- 手爪单边行程 150...200 mm
- 夹持力 1...20000 N
- 精密导轨，高载荷
- 可选配感应式位置传感器
- 可选手指运动控制方式

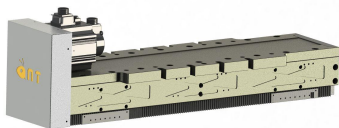
单电机手指同步控制

双电机手指独立控制

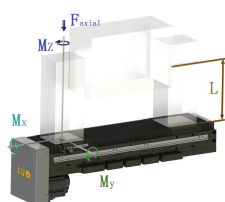
抓取力图表/Gripping force chart



AGDK



静态力和力矩/Static forces and torques

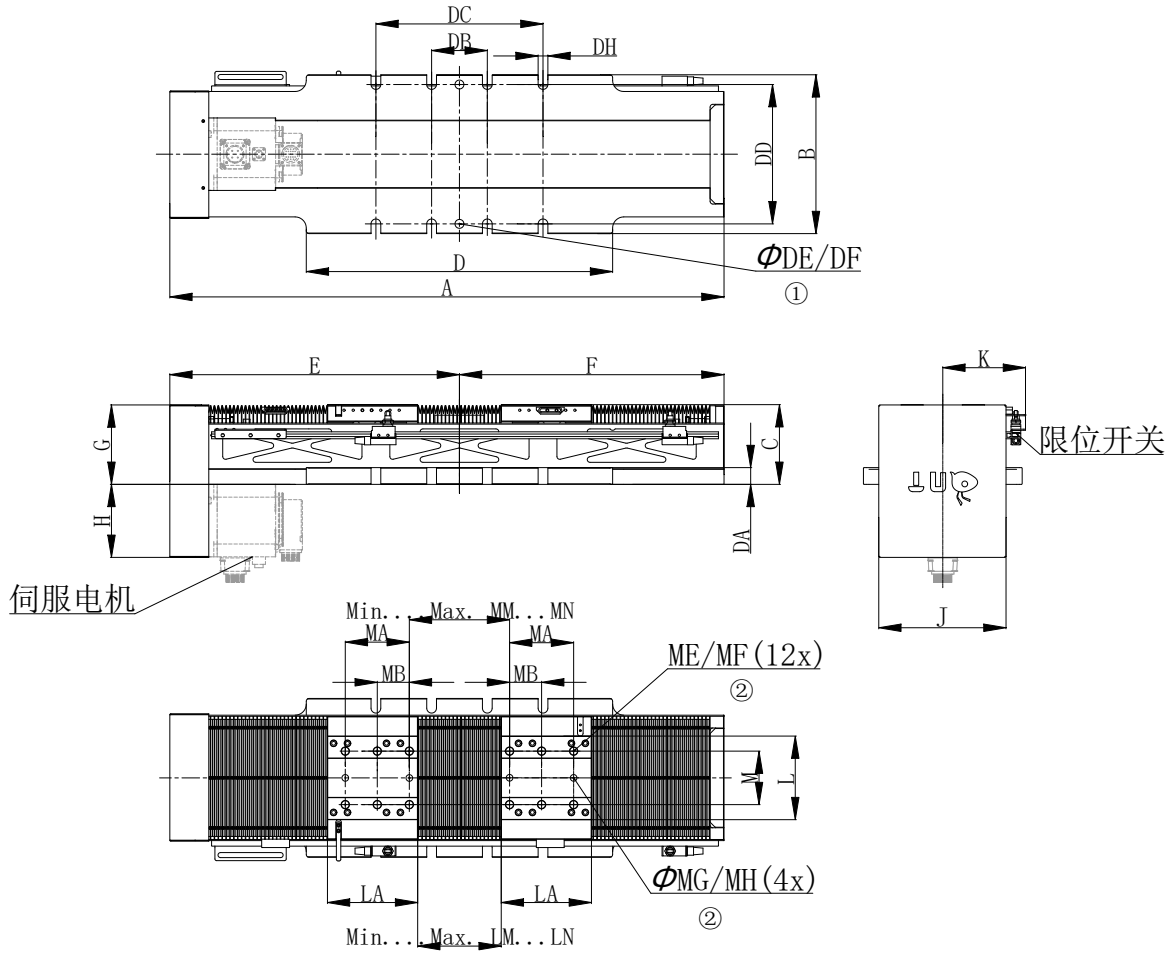


	夹紧静负载		开闭动负载	
	AGDK 20-150	AGDK 250-200	AGDK 20-150	AGDK 250-200
M_x max.	300.0 Nm	850.0 Nm	26.25Nm	62.5 Nm
M_y max.	150.0 Nm	850.0 Nm	26.25 Nm	62.5 Nm
M_z max.	120.0 Nm	650.0 Nm	—	—
F_{axial} max.	2000.0 N	8000.0 N	150N	250 N

技术资料 Technical data

Description		AGDK 20-150	AGDK 250-200
手指单边行程 Stroke per finger	mm	150	200
最大夹持力 Max. gripping force	N	4000	20000
减速比 Deceleration ratio		1:3	1:2.5
适配伺服电机 Adapt motor	规格	60	100/130
	电机功率	400W	1KW/2KW
最大允许输入扭矩 Max. Allowable input torque	Nm	3	18
自重 Self weight	Kg	22	100
重复精度 Repeat accuracy	mm	0.05	0.1
手指允许最大速度 Max. permitted finger speed	mm/s	120	150
手指允许最大抓取速度 Max. Permitted finger Gripping speed	mm/s	10	10
最大手指长度 Max. permitted finger length	mm	350	500
单个手指最大重量 Max. permitted weight per finger	Kg	15	25
适应最小/最大环境温度 Min./Max. ambient temperature	°C	5/65	
IP 等级 IP class		41	

尺寸图/Dimensions



- ① 手爪连接 Gripper connection
- ② 手指连接 Finger connection

	A	B	C	D	DA	DB	DC	DD	DE	DF	DH	E	F	G	H	J	K	L	LA	LM
AGDK 20-150	695	140	127	305	20	100±0.1	200±0.1	127±0.1	8H7	12	6.6	362.5	332.5	126.5	71	115	86	80	100	90
AGDK 250-200	994	285	143	550	30	100±0.1	300±0.1	250±0.1	16H7	20	16.5	520	474	143	131	228.5	142	150	162	88

	LN	M	MA	MB	ME	MF	MG	MH	MM	MN
AGDK 20-150	190	50	66	33	M6	12	6H7	10	124	424
AGDK 250-200	488	96	115	57.5	M16	30	12H7	16	118	518